

Current and emerging biomarkers in breast cancer: prognosis and prediction

Marion T Weigel¹ and Mitch Dowsett^{1,2}

¹The Institute of Cancer Research, Breakthrough Breast Cancer Research Centre, 237 Fulham Road, London SW3 6JB, UK

²Royal Marsden Hospital, Fulham Road, London SW3 6JJ, UK

(Correspondence should be addressed to M Dowsett; Email: mitch.dowsett@icr.ac.uk)

Abstract

Breast cancer treatment has experienced several changes in the past decades due to the discovery of specific prognostic and predictive biomarkers that enable the application of more individualized therapies to different molecular subgroups. These subgroups show specific differences regarding biological clinical behavior. In addition to the classical clinical prognostic factors of breast cancer, established molecular biomarkers such as estrogen receptor and progesterone receptor have played a significant role in the selection of patients benefiting from endocrine therapy for many years. More recently, the human epidermal growth factor receptor 2 (HER2) has been validated to be not only a prognostic factor, but also a predictor of response to HER2 targeting therapy. The shift toward an earlier diagnosis of breast cancer due to improved imaging methods and screening programs highlights the need for new factors and combinations of biomarkers to quantify the residual risk of patients and to indicate the potential value of additional treatment strategies. The marker of proliferation Ki67 has recently emerged as an important marker due to several applications in neoadjuvant therapy in addition to its moderate prognostic value. With the introduction of high-throughput technologies, numerous multigene signatures have been identified that aim to outperform traditional markers: current prospective clinical trials are seeking evidence for their definitive role in breast cancer. There exist many more factors and approaches that have the potential to become relevant in the near future including the detection of single disseminating and circulating tumor cells in blood and bone marrow as well as of circulating cell-free DNA and microRNA. Careful randomized prospective testing and comparison with existing established factors will be required to select those emerging markers that offer substantial cost-effective benefit and thereby justify their routine use for breast cancer therapy decision-making.

Endocrine-Related Cancer (2010) 17 R245–R262

Introduction

Breast cancer is still one of the leading causes of cancer death in women, but there has been a sustained decline in mortality rates over the last decades. The incremental application of increasingly effective adjuvant medical treatments is one of the major factors for this development, despite an increasing incidence of breast cancer. As a result of regular mammography screening programs, a shift toward the detection of early-stage (<2 cm) node-negative breast cancer with better prognosis has occurred. While this almost certainly also contributes to improved outcomes, it also poses a challenge for clinicians regarding the choice of optimal adjuvant treatment. The relapse rate

after surgery alone in patients detected with early breast cancer is relatively low, and the individual estimation of the absolute benefit of systemic chemotherapy has to be taken in consideration when making therapeutic decisions. It is of great importance to avoid overtreatment in patients who only receive a modest benefit, while suffering from toxic side effects. On the other hand, undertreatment or incorrect treatment also has to be avoided. It is therefore necessary to define specific characteristics, which provide the possibilities for individual treatment optimization.

Classical clinicopathological features indicating patient prognosis include tumor size, histological

subtype and grade, lymph node metastases, and lymphovascular invasion, which are derived from careful histological analysis of primary breast cancer samples. The TNM (tumor size, nodes, metastasis) system integrates these into tumor stages that have major prognostic value (Table 1). But in this era of high-throughput methods, a deluge of novel biomarkers have been reported for prognostic and predictive purposes. But out of these, only a few have made their way into clinical routine due to the lack of sufficient validation to reach a Level of Evidence I or II according to the American Society of Clinical Oncology's Tumor Marker Utility Grading System (Hayes *et al.* 1996, Harris *et al.* 2007). Using this system, only two biomarkers, estrogen receptor (ER) and human epidermal growth factor receptor 2 (HER2), have been established and are assessed routinely in every breast cancer. Nonetheless, the identification of new markers has led to a more definitive insight into tumor biology and substantiates

the importance of the existing biomarkers. To facilitate future research on biomarkers, a guideline named reporting recommendations of tumor marker prognostic studies (REMARK) has been published, which recommends a description of the amount of information that should be provided when reporting the results of biomarker studies (McShane *et al.* 2005).

In this review, we discuss the importance of established prognostic factors and predictive biomarkers as well as some emerging biomarkers that are currently undergoing testing for technical validity and clinical utility.

Prognosis and prediction

Prognostic and predictive markers are both of high relevance in therapeutic decision procedures in order to individualize treatment, but they have distinct roles. Prognostic and predictive factors may be derived from either the characteristics of the patient or the tumor

Table 1 TNM classification for breast cancer

T (tumor size)	
TX	Primary tumor cannot be assessed
T0	No evidence of primary tumor
Tis	Carcinoma <i>in situ</i> ; intraductal carcinoma, lobular carcinoma <i>in situ</i> , or Paget's disease of the nipple with no associated tumor
T1	Tumor 2.0 cm or less in greatest dimension T1mic: microinvasion 0.1 cm or less in greatest dimension T1a: tumor more than 0.1 cm but not more than 0.5 cm in greatest dimension T1b: tumor more than 0.5 cm but not more than 1.0 cm in greatest dimension T1c: tumor more than 1.0 cm but not more than 2.0 cm in greatest dimension
T2	Tumor more than 2.0 cm but not more than 5.0 cm in greatest dimension
T3	Tumor more than 5.0 cm in greatest dimension
T4	Tumor of any size with direct extension to T4a: extension to chest wall T4b: edema (including peau d'orange) or ulceration of the skin of the breast or satellite skin nodules confined to the same breast T4c: both of the above (T4a and T4b) T4d: inflammatory carcinoma
N (nodes)	
NX	Regional lymph nodes cannot be assessed (e.g. previously removed)
N0	No regional lymph node metastasis
N1	Metastasis to movable ipsilateral axillary lymph node(s) pN1a: only micrometastasis (none larger than 0.2 cm) pN1b: metastasis to lymph node(s), any larger than 0.2 cm pN1bi: metastasis to one to three lymph nodes, any more than 0.2 cm and all <2.0 cm in greatest dimension pN1bii: metastasis to four or more lymph nodes, any more than 0.2 cm and all <2.0 cm in greatest dimension pN1biii: extension of tumor beyond the capsule of a lymph node metastasis <2.0 cm in greatest dimension pN1biv: metastasis to a lymph node 2.0 cm or more in greatest dimension
N2	Metastasis to ipsilateral axillary lymph node(s) fixed to each other or to other structures
N3	Metastasis to ipsilateral internal mammary lymph node(s)
M (distant metastasis)	
MX	Presence of distant metastasis cannot be assessed
M0	No distant metastasis
M1	Distant metastasis present (includes metastasis to ipsilateral supraclavicular lymph nodes)

p, pathologically determined.

type. Prognostic factors intend to predict objectively and independently patient clinical outcome independent of treatment, while predictive factors aim to foretell the response of a patient to a specific therapeutic intervention and are associated with tumor sensitivity or resistance to that therapy. Prognostic factors necessarily require definition in patient cohorts that did not undergo systemic adjuvant treatment.

Predictive markers may be the target of a specific therapy itself. For example, the oncogene *HER2* is the target of the monoclonal antibody trastuzumab, and *HER2* amplification predicts for a good response to anti-*HER2* therapy. It is important to note that *HER2* status is also prognostic, and like many factors, it has mixed prognostic/predictive significance. Similarly *Ki67*, which will be discussed in more detail below, as a marker of proliferation displays a strong prognostic effect, but it also appears to predict for a good response to systemic chemotherapy. In general, prognostic markers help to determine whether a patient requires treatment, and a predictive factor is useful in deciding which treatment will be the best.

Lately, there has been an increase in implementation of marker combinations to define treatment-specific prognoses. This is of special interest to define the residual risk of recurrence when a patient is treated in a specific manner and to evaluate the potential importance of further treatment options. Great efforts, especially on the transcriptome level, have been made to discriminate which ER-positive early breast cancer patients would really benefit from additional chemotherapy and who could be spared of it and the side effects. The ability to do this was highlighted as the top priority question in breast cancer translational research in an international survey of breast cancer specialists (Dowsett *et al.* 2007a).

Established biomarkers

Estrogen receptor

ER (α) expression is undoubtedly the most important biomarker in breast cancer, because it provides the index for sensitivity to endocrine treatment. ER-positive tumors (c. 80% of breast cancer) use the steroid hormone estradiol as their main growth stimulus; ER is therefore the direct target of endocrine therapies. The Oxford overview confirms that patients with ER-negative disease have no benefit from 5-year adjuvant treatment with tamoxifen, but some benefit may be derived in the uncommon group of ER-negative and progesterone receptor (PgR)-expressing

breast tumors (2005). In contrast, such treatment reduces the annual breast cancer death rate by 31% in ER-positive disease.

While the absence or presence of the ER is used to obtain treatment decisions, little attention has been paid on the value of the quantitative expression levels as a predictive indicator. Evidence from the 1970s suggests a direct correlation between ER expression levels and response to endocrine therapy (Byar *et al.* 1979). The Early Breast Cancer Trialists' Collaborative Group reported that higher levels of ER were associated with a lower risk of recurrence when receiving adjuvant tamoxifen (1998). Similar results were obtained in the NSABP-14 trial using the ligand-binding assay and mRNA expression of ER (Paik *et al.* 2004). More recent analyses from the large prospective adjuvant trials anastrozole, tamoxifen, alone or in combination (ATAC) and BIG 1-98 (letrozole versus tamoxifen) comparing aromatase inhibitors (AIs) with tamoxifen did not find a subgroup of ER-positive patients with different ER expression levels, which derives a greater benefit from AIs versus tamoxifen (Viale *et al.* 2007, Dowsett *et al.* 2008). The trials revealed, however, that higher ER levels were related to improved outcome of both the endocrine treatments (Fig. 1).

It has been reported that ER status predicts for response to chemotherapy in the neoadjuvant setting. Multiple clinical studies have demonstrated that the ER-negative breast cancer patients are more likely to achieve a pathological complete response (pCR) with neoadjuvant chemotherapy than the ER-positive patients, with pCR rates of 7–8 vs 21–33% respectively being reported (Colleoni *et al.* 2004, Ring *et al.* 2004). This may be partly explicable by the ER-negative breast tumors tending to have higher proliferation rates, but this does not appear to provide a full explanation (Jones *et al.* 2009).

There have also been investigations concerning the amplification of the ER gene (*ESR1*). An initial report indicated that *ESR1* gene amplification in breast cancer could be detected in ~20% of all invasive tumors, and that there was a correlation between the gene amplification and ER expression levels (Holst *et al.* 2007). However, <3% of invasive breast cancer cases were reported as *ESR1* amplified by other independent groups (Brown *et al.* 2008, Horlings *et al.* 2008, Reis-Filho *et al.* 2008).

Extensive research has been undertaken in trying to discover the function and relevance of different splice variants and point mutations of the ER. One ER mutation (K303R), which leads to a receptor that is able to induce proliferation even in conditions of low

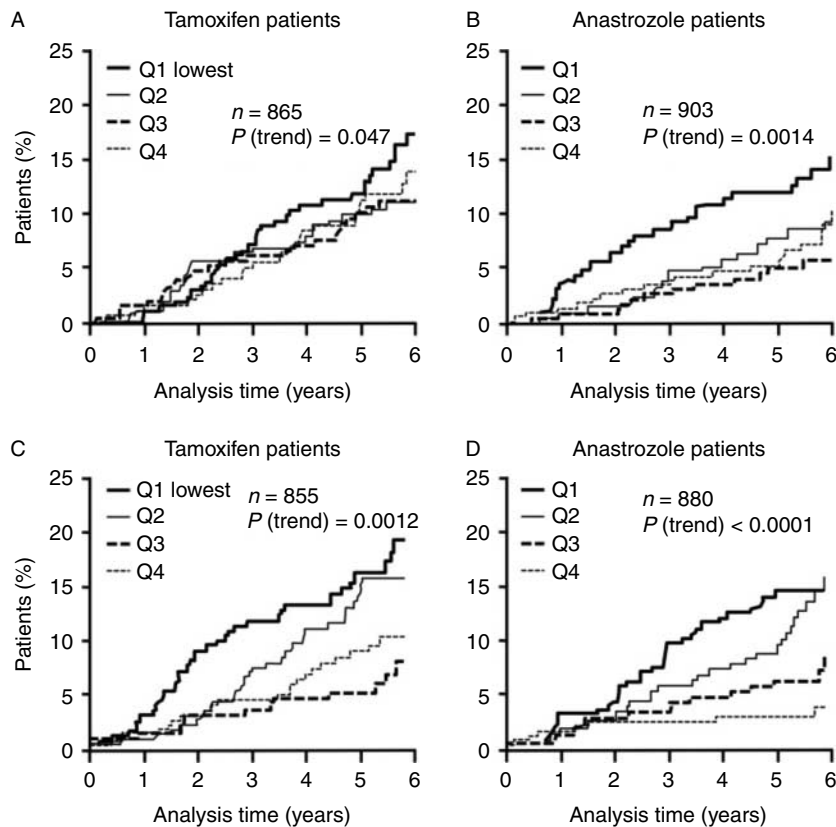


Figure 1 Time to recurrence for (A and C) tamoxifen-treated and (B and D) anastrozole-treated patients included in the ATAC trial, grouped according to the quartile (Q) of (A and B) estrogen receptor H-score and (C and D) progesterone receptor percentage staining quartiles. Reprinted with permission. 2008 American Society of Clinical Oncology. All rights reserved. Dowsett M, Allred C, Knox J, Quinn E, Salter J, Wale C, Cuzick J, Houghton J, Williams N, Mallon E *et al.* 2008 *Journal of Clinical Oncology* **26** 1059–1065.

hormone levels, has been reported as being associated with benign breast hyperplasia and breast cancer by one group (Herynk & Fuqua 2004) but not confirmed by others. Despite much investigation of *ESR1* mutations and splice variants, their clinical role appears to be small.

The recently released guideline of the American Society of Clinical Oncology (ASCO) and the College of American Pathologists (CAP) has the aim to improve hormone receptor testing for patients with breast cancer, and recommends ER and PgR testing in all newly diagnosed cases as well as in any local or distant recurrence whenever appropriate (Hammond *et al.* 2010).

Progesterone receptor

The expression of the PgR is strongly dependent on the presence of ER. Tumors expressing PgR but not the ER are uncommon and represent <1% of all breast cancer cases in some large series (Viale *et al.* 2007). For this

reason, tumors with PgR expression lacking ER expression should undergo a retesting of their ER status to eliminate false ER negativity. In the rare cases of solely PgR-expressing patients, some limited benefit from tamoxifen is described, but endocrine therapy is still widely recommended (Dowsett *et al.* 2006a).

There is evidence that in metastatic breast cancer the response to anti-estrogen treatment is better among patients with tumors expressing both ER and PgR versus those who only show ER positivity but lack the PgR expression (Elledge *et al.* 2000). Data from adjuvant trials comparing tamoxifen treatment with controls indicate a strong prognostic value for PgR expression, but indicate a little predictive significance (Dowsett *et al.* 2006a). Patients with high levels of PgR within their breast tumors have a better outcome than low expressors with tamoxifen, but the relative benefit from tamoxifen remains similar (2005, Dowsett *et al.* 2006a).

The impact of PgR expression on response to and outcome of treatment with AIs has been less clear.

The ATAC trialists published a hypothesis generating report suggesting that patients with PgR-negative breast cancer would obtain a substantially greater benefit from anastrozole than from tamoxifen compared with PgR-positive patients (Dowsett *et al.* 2005a). However, this hypothesis was not confirmed in centrally analyzed material from 1856 ER- and/or PgR-expressing patients (Fig. 1). Moreover, the BIG 1-98 trial reported that the benefit from letrozole over tamoxifen did not vary according to the PgR status (Viale *et al.* 2007). Nevertheless, these adjuvant trials clearly supported the existence of a strong relationship between PgR expression levels and prognosis on endocrine therapy, which may be useful in estimating residual risk.

HER2

The oncogene *HER2* was first identified to be an indicator of patient's prognosis. In cases of *HER2* being overexpressed (*HER2* positive), breast cancer patients are more likely to suffer from relapse and tend to have a shorter overall survival. Amplification of the *HER2* gene and RNA/protein overexpression correlate strongly (Pegram *et al.* 2000). Through the development of the monoclonal antibody trastuzumab, which is targeted at *HER2*, the amplification status of *HER2* became also a highly predictive biomarker (Slamon *et al.* 1987, Mass *et al.* 2005). Overexpression and amplification of *HER2* can be detected in about 15% of all primary breast cancers, and this group of patients benefit significantly from anti-*HER2* therapies. *HER2* status should be assessed in every diagnosed case of breast cancer (Romond *et al.* 2005, Smith *et al.* 2007).

HER2 status is currently assessed in most cases initially by immunohistochemistry, and in cases of equivocal protein expression levels, *HER2* gene copy number is measured via fluorescence *in situ* hybridization (FISH) or chromatin *in situ* hybridization (CISH) techniques (Wolff *et al.* 2007). Usually, when using ISH techniques, two locus-specific probes, one for *HER2* and the other for the centromere of chromosome 17 (CEP17), are applied, and the ratio of the two is calculated. A ratio >2.2 is considered unambiguously positive. The need for accurate application of anti-*HER2* therapy to the sensitive population highlights the importance of accurate testing. This led to the creation of the American Society of Clinical Oncology/College of American Pathologists guidelines on methodology for immunohistochemistry and ISH techniques for establishing gene copy number of *HER2* as well as on test interpretation (Wolff *et al.* 2007).

HER2 amplification or gain beneath the threshold of two gene copies per CEP17 seems to have only little or no significance in terms of prognosis and prediction of benefit from anti-*HER2* treatment in the adjuvant setting (Dowsett *et al.* 2009), but some uncertainty in the precise level of this threshold has arisen. This is due to a small subgroup included in the NSABP-B31 trial on the basis of local *HER2*-positive status that showed a significant benefit from trastuzumab, despite central analysis of their tumors revealing *HER2* negativity (Paik *et al.* 2008).

Recent studies also describe an association of *HER2* amplification with benefit from adjuvant doxorubicin-based chemotherapy (Muss *et al.* 1994, Dressler *et al.* 2005) as well as from paclitaxel administered after four cycles of doxorubicin plus cyclophosphamide (Hayes *et al.* 2007). The benefit of *HER2*-positive patients from anthracyclines appears to be exclusive to the subgroup with *HER2*-amplified tumors, although some data suggest that this may be due to a co-amplification of the *topoisomerase II α* gene (Gennari *et al.* 2008). Yet more recent data suggest that this relationship of *HER2* and/or *topoisomerase II α* with anthracycline response may be due to polysomy of chromosome 17 rather than due to amplification of the genes *per se* (Bartlett *et al.* 2010).

A poorer response to tamoxifen has been reported among hormone receptor and *HER2*-positive patients, but the impediment to response is insufficient for the selection of endocrine treatment agents to be influenced by the *HER2* status (Ring & Dowsett 2004). Neither the ATAC nor the BIG 1-98 trials observed differences in the benefit between tamoxifen and AIs according to *HER2* status (Viale *et al.* 2007, Dowsett *et al.* 2008).

Within the last few years, many more promising agents targeting *HER2* have been developed including monoclonal antibodies and tyrosine kinase inhibitors. For them, *HER2* status is likely to be a predictive marker as well (Widakowich *et al.* 2008). The preliminary finding that patients expressing a truncated cytoplasmic *HER2* receptor (p95*HER2*) show a poor response to trastuzumab (Anido *et al.* 2006), but may benefit from the tyrosine kinase inhibitor lapatinib (Scaltriti *et al.* 2007), might have some implications for future *HER2* testing.

Emerging biomarkers

Ki67

The marker of proliferation Ki67 was first identified by Gerdes *et al.* (1983) in the 1980s using a mouse monoclonal antibody against a nuclear antigen from a

Hodgkin's lymphoma cell line. Ki67 is a nuclear non-histone protein and was named after the researcher's location. In this context, Ki stands for the University of Kiel, Germany, and 67 refers to the number of the clone on the 96-well plate. The characteristic that Ki67 was universally expressed among proliferating cells and absent in quiescent cells led to the further evaluation of Ki67 as a marker of proliferation. Although little is known about the exact function of the protein in cell division, Ki67 is expressed during G₁, S, and G₂ phases of cell cycle with a peak during mitosis and an absence in G₀ phase (Lopez *et al.* 1991).

Although initially the Ki67 antibody was applied only to fresh frozen tissue, many more antibodies with applicability in paraffin-embedded tissue were developed with MIB-1 (targeting the same epitope as the original one) being the most frequently used (Harris *et al.* 2007). Ki67 expression levels are determined as the percentage of tumor cell nuclei positively stained. Until now, no absolute standard methodology and cut-off point have been defined.

The correlation of Ki67 and other biomarkers in invasive breast cancer has been studied intensively. Unsurprisingly, given that the Nottingham grading system defines mitotic rate as one of its three criteria (Trihia *et al.* 2003), there is a good correlation with tumor grade. The relationship with ER has been predominantly described as an inverse correlation with lower proliferative activity in ER-positive tumors (Haerslev *et al.* 1996). There are hints of a correlation with HER2 as well, but this is not completely defined (Nicholson *et al.* 1993, Rudolph *et al.* 1999).

A possible prognostic role for proliferation marker Ki67 in breast cancer has been investigated in many studies. A review of 40 studies involving more than 11 000 patients presented by our group (Urruticoechea *et al.* 2005) describes strong evidence for the ability of Ki67 as a single variable to distinguish between a good or bad outcome in the group of node-negative patients. Unfortunately, this ability is not maintained in the multivariate analyses in all of the included studies. Another meta-analysis including disease-free survival data from 29 studies confirmed the adverse effect on overall survival and disease-free survival in cases of positive staining for Ki67 among both the node-negative and node-positive breast cancer (de Azambuja *et al.* 2007). Although the most recently published analysis of 15 790 cases from 43 studies reported an association of Ki67 positivity with shorter overall survival, Ki67 staining is still not recommended as a prognostic marker for routine use (Stuart-Harris *et al.* 2008).

New approaches of combining established markers with novel factors are currently under evaluation. One of these is an immunopanel of ER, PgR, HER2, and Ki67, whose ability to distinguish between luminal A and B subtypes in a similar manner as the original 50-gene signature has been shown (Cheang *et al.* 2009). In this context, a cut-off of 13.25% Ki67 positive staining was used to discriminate between the subtypes, meaning that a higher score defines luminal B tumors with a worse prognosis.

In early as well as locally advanced breast cancer, baseline Ki67 has been found to predict for response to chemotherapy, whereas this is not the case for endocrine treatment (Chang *et al.* 2000a,b, Faneyte *et al.* 2003). Findings of our group indicate that post-neoadjuvant chemotherapy measurement of Ki67 is a strong predictor for recurrence-free and overall survival. However, a high pretreatment score is associated with a good chance to achieve a pCR, and this is a predictor of long-term outcome in these patients (Jones *et al.* 2009).

In the BIG 1-98 adjuvant trial of letrozole versus tamoxifen, the absolute benefit of the AI over tamoxifen was greatest at the highest levels of Ki67 (Viale *et al.* 2007). This was due predominantly to the poorer prognosis of those patients with there being a significant increase in relative benefit.

Recent neoadjuvant endocrine studies have evaluated the use of serial Ki67 measurements. These have found that the detection of changes in Ki67 predicts for treatment benefit and highlighted the role of measuring Ki67 early on-treatment as a superior predictor of long-term outcome than pretreatment expression. In this context, the results of the IMPACT trial demonstrated that the decrease in Ki67 was greater at 2 and 12 weeks of AI treatment than treatment with tamoxifen or the combination of the two drugs (Dowsett *et al.* 2005b,c, 2006b). Thus, the IMPACT trial showed similarly greater efficiency of the AI versus tamoxifen and the combination as observed in the adjuvant ATAC trial, where the anastrozole alone arm showed a prolonged recurrence-free survival (Howell *et al.* 2005). The adjuvant trial required 30 times as many patients and 10 times the follow-up compared with the neoadjuvant trial to make its first report on efficacy. While on-treatment measurements of Ki67 will not replace the need for adjuvant trials, they do provide an approach to quickly test the potential effectiveness of candidates for phase III trials. Moreover, higher Ki67 levels after 2 weeks of endocrine treatment were linked to shorter recurrence-free survival, and the pretreatment value added no extra prognostic information

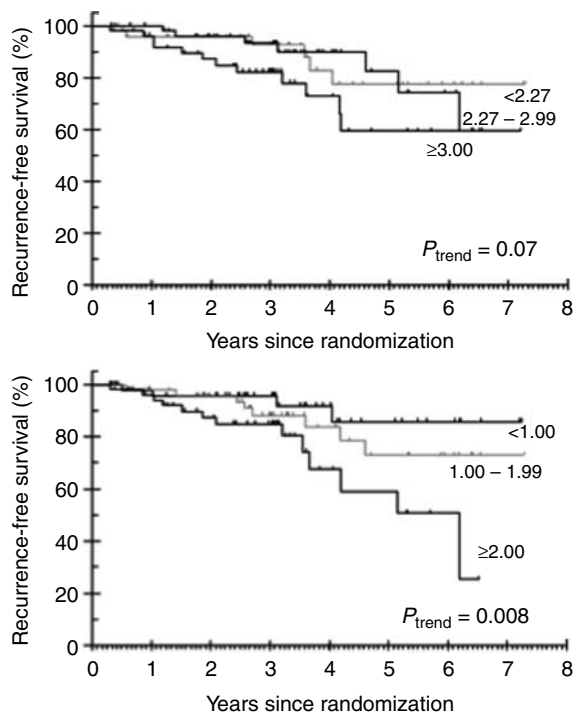


Figure 2 Recurrence-free survival according to tertiles of tumor Ki67 expression at baseline (top panel) and after 2 weeks of treatment (bottom panel) from patients included in the IMPACT trial. Reprinted with permission from Dowsett M, Smith IE, Ebbs SR, Dixon JM, Skene A, A'Hern R, Salter J, Detre S, Hills M, Walsh G 2007 Prognostic value of Ki67 expression after short-term presurgical endocrine therapy for primary breast cancer. *Journal of the National Cancer Institute* 99 167–170. Oxford University Press, 2007.

(Fig. 2; Dowsett *et al.* 2007b). The evaluation of this concept is currently conducted in the perioperative endocrine treatment for individualizing care (POETIC) trial. The main biomarker aim of this trial is to determine whether the measurement of Ki67 after 2 weeks of presurgical treatment with AI is sufficiently more predictive than in the absence of treatment to merit introducing this to routine clinical practice. In the case of a positive result, this has the potential to radically change the assessment of prognostic markers.

Cyclin D1

Cyclin D1 is overexpressed at the mRNA and protein level in over 50% of breast cancer cases including 15% in which a gene amplification occurs (Buckley *et al.* 1993, Gillett *et al.* 1994, Ormandy *et al.* 2003). Cells in the G₁ phase of the cell cycle react to growth factor stimulation with the induction of D-type cyclins (Musgrove *et al.* 1993). Subsequently, cyclin D1

binds to cyclin-dependent kinases leading to phosphorylation of various substrates including RB protein (Matsushime *et al.* 1994). This contributes to the regulation of G₁–S phase transition in the cell cycle. In particular, cyclin D1 has the ability to regulate the proliferation of estrogen-responsive cells (Zwijsen *et al.* 1997), and a strong positive correlation with ER and PgR expression levels has been described (Hui *et al.* 1996, Barbareschi *et al.* 1997, Jares *et al.* 1997). Importantly, while there is strong evidence that overexpression of cyclin D1 is a prognostic factor for better outcome in invasive breast cancer, in particular among ER-positive patients (Gillett *et al.* 1996, Hwang *et al.* 2003, Bilalović *et al.* 2005), its amplification is associated with early relapse and poor prognosis (Michalides *et al.* 1996, Seshadri *et al.* 1996, Bièche *et al.* 2002). A possible predictive value of cyclin D1 in hormone receptor-positive patients has also been shown recently: overexpression as well as amplification is a predictor of poor response to anti-estrogen treatments (Stendahl *et al.* 2004, Jirstrom *et al.* 2005). Cyclin D1 merits further investigation in this context.

Cyclin E

Cyclin E acts similarly to cyclin D1 as a positive regulator of cell cycle transition with peak levels of protein expression and enzymatic complex formation with cyclin-dependent kinase 2 in the G₁ phase (Koff *et al.* 1992). *Cyclin E* gene amplification has been detected in several breast cancer cell lines, and there is strong evidence that cyclin E plays a role in tumorigenesis (Buckley *et al.* 1993, Keyomarsi & Pardee 1993, Bortner & Rosenberg 1997). The full-length protein is altered by post-translational cleavage resulting in hyperactive low molecular weight forms, which are uniquely detectable in tumor cells and correlate with increasing stage and grade of breast cancer (Keyomarsi *et al.* 1994, Nielsen *et al.* 1996, Wang *et al.* 1996, Wingate *et al.* 2009). The clinical significance of cyclin E has been studied repeatedly. One study measured cyclin E expression in 395 primary breast cancer cases, and correlated the data with established prognostic factors and clinical outcome. Both low molecular weight and total cyclin E levels emerged as the most powerful discriminants of overall and disease-free survival outperforming classical clinical and pathological biomarkers in univariate and multivariate analyses (Keyomarsi *et al.* 2002). The role of cyclin E in cell cycle suggests that increased levels may alter the response to chemotherapy and endocrine therapy. It has been

shown that altered levels increase the sensitivity of breast cancer cells to cisplatin and paclitaxel effects (Smith & Seo 2000), but on the other hand facilitate the resistance to anti-estrogens (Akli & Keyomarsi 2004). These results have to be validated in prospective trials.

ER β

First discovered in 1996, ER β is frequently expressed in cells of different organs. Although the two ER subtypes are encoded by different genes located on two different chromosomes, they have much in common structurally. The ligand-binding domain in the subtypes exhibits a 59% homology (Enmark *et al.* 1997, Matthews & Gustafsson 2003). Both receptors tend to bind to estrogen-response elements with similar affinity due to a high homology of their DNA-binding domains. Remarkably, ER β has the ability to mediate sometimes opposite effects to ER α due to different binding regions (Liu *et al.* 2008) and the existence of different splice variants of ER β . Especially, ER β cx is known to exhibit a dominant-negative activity against ER α (Herynk & Fuqua 2004).

A role of ER β in tumorigenesis has been suggested due to its significant down-regulation in breast cancer compared with normal breast tissue in contrast to ER α (Roger *et al.* 2001, Skliris *et al.* 2003, Bardin *et al.* 2004). A strong down-regulation of c-myc, a regulator of cell cycle and transcription, can be observed in the presence of ER β , which may explain ER β 's anti-proliferative effects (Ström *et al.* 2004). Initially, ER β mRNA levels were used to evaluate its prognostic value. This led to contrary results, associating ER β with poor prognosis and endocrine resistance on one side, and a good prognosis on the other side (Leygue *et al.* 1998, Speirs *et al.* 1999, Park *et al.* 2003). The availability of specific antibodies made it possible to relate ER β protein levels with good prognosis, prolonged disease-free survival, and response to tamoxifen (Skliris *et al.* 2003, Hopp *et al.* 2004). Moreover, ER β expression has been linked to the expression of ER α and PgR (Järvinen *et al.* 2000, Omoto *et al.* 2001), and in ER α -negative breast cancer, ER β is expressed in about 50% of the cases (Skliris *et al.* 2006). In this setting, ER β correlates positively with the marker of proliferation Ki67, and an association with HER2 overexpression has been described (Jensen *et al.* 2001, Skliris *et al.* 2006, Umekita *et al.* 2006). However, further studies are needed before ER β could be used as a diagnostic tool and possible target of therapy.

Multigene parameters

In the last two decades, the human genome project and the development of high-throughput technologies have paved the way for the so-called '-omics' revolution. Gene expression profiling of tumors allows the measurement of thousands of mRNA transcripts in one single experiment using DNA microarrays. The recent St Gallen consensus statement provides the view that the use of a validated multigene profiling assay is warranted as an adjunct to high-quality phenotyping of breast cancer in cases in which the indication for adjuvant chemotherapy remains uncertain (Goldhirsch *et al.* 2009).

In breast cancer, the results of these expression profiling studies indicated the existence of a number of molecularly distinct neoplastic disorders, which appear to originate from different cell types. Perou *et al.* (2000) were the first to distinguish four molecular classes of breast cancer with their 'intrinsic' classification: luminal cancers, which are almost all ER positive, express cytokeratin 8 and 18 typically for the mammary gland, and are divided into luminal A, which are mostly histologically low grade, and luminal B, which tend to be of high grade with a worse prognosis; HER2-positive cancers, which show amplification and overexpression of the *ERBB2* gene, do not express hormone receptors and are of poor prognosis; basal-like breast cancers, which overlay markedly with ER-, PgR-, and HER2-negative (triple negative) tumors with a poor prognosis and expression of cytokeratins of the basal epithelial layer (CK 5/6, CK 17; Sørlie *et al.* 2001, 2003, Sotiriou *et al.* 2003). As indicated, these subgroups correspond closely to the earlier classification on the basis of hormone receptor and HER2 status.

Several groups have grasped the challenge to develop genomic tests based on genomic profiling with the expectation that this might better predict for clinical outcome than the standard pathological and clinical markers (Table 2). A 70-gene signature called MammaPrint (Agendia, Amsterdam, The Netherlands) has been developed using frozen samples from a group of 78 patients. These were selected retrospectively with node-negative breast cancer smaller than 5 cm, no adjuvant chemotherapy, and younger than 55 years (van 't Veer *et al.* 2002). The top 70 genes, which most significantly correlated with clinical outcome (distant metastases within 5 years), were shown to accurately classify tumors in good or poor prognostic categories. The signature was validated retrospectively on a set of 295 patients including both lymph node positive and negative disease. This validation showed that the gene

Table 2 Multigene parameters in breast cancer

Gene signature	Number of genes assessed	Tissue	Application	Trials
MammaPrint	70	Fresh frozen	Prognostic for recurrence within 5 years in all node-negative and node-positive patients	MINDACT
Oncotype DX	21	FFPE	Residual risk of DR in ER-positive patients treated with tamoxifen or AIs; and predictive of chemotherapy benefit in node-negative ER-positive patients	TAILORx
Genomic-grade index	97	Originally fresh frozen, validated for FFPE	Prognostic, prediction of relapse in endocrine-treated ER-positive breast cancer	
Molecular grade index	5	FFPE	Predicts poor outcome despite endocrine therapy in ER-positive breast cancer	
Rotterdam signature	76	Fresh frozen	Prognostic for development of distant metastases within 5 years	

FFPE, formalin-fixed, paraffin-embedded; ER, estrogen receptor; DR, distant recurrence; AI, aromatase inhibitor.

signature outperformed all of the traditional clinical prognostic factors (van de Vijver *et al.* 2002). Unfortunately, some of the patients had received adjuvant systemic therapy, and some were also included in the training set. A second validation study using the TRANSBIG series also confirmed the prognostic capacity of the gene signature (Buyse *et al.* 2006) and a comparison with the Adjuvant! Online software revealed that the genomic test appeared to be able to more accurately predict outcome in discordant cases (Sotiriou & Pusztai 2009). The FDA has approved MammaPrint for clinical use as a prognostic test for women of the age 61 years or below with either ER-positive or ER-negative, lymph node-negative breast cancer, but a prospective validation trial to determine its clinical utility is currently recruiting. This is the microarray in node-negative disease may avoid chemotherapy (MINDACT) trial, which is expected to enrol 6000 breast cancer patients who will have a risk assessment using clinicopathological factors (Adjuvant! Online) and the 70-gene profile. Patients will receive adjuvant chemotherapy if both the tests predict high risk and if both indicate a low risk chemotherapy will be withheld. In case of discordant results, patients will be randomized to follow one result (Bogaerts *et al.* 2006).

The Oncotype DX signature was designed to predict better the risk of distant recurrence in patients with ER-positive early breast cancer receiving tamoxifen. This test is based on real-time PCR measurement of the expression of 16 genes with known significance in breast cancer and of 5 reference genes (Table 3). A recurrence score (RS) is calculated with a mathematical algorithm, which was developed and established

using samples of the tamoxifen arms of the NSABP-B20 and B-14 trials (Paik *et al.* 2004). The RS is a continuous measurement of risk, but it has generally been used to identify three groups with a low, intermediate, and high risk of distant recurrence, which were associated with <10%, 10–30%, and >30% 10-year recurrence rates among tamoxifen-treated patients. The RS has been described to be predictive of overall survival and distant recurrence independent of age and tumor size.

Table 3 A 21-gene panel used for the Oncotype DX assay to calculate the recurrence score: 16 cancer-related genes and 5 reference genes

Factor	Gene
Proliferation	Ki67
	STK15
	Survivin
	Cyclin B1
	MYBL2
Estrogen	ER
	PgR
	BCL2
Invasion	SCUBE2
	Stromelysin 3
	Cathepsin L2
HER2	GRB7
Other	HER2
	GSTM1
	CD68
Reference	BAG1
	β-Actin
	GADPH
	RPLPO
	GUS
	TFRC

In the largest series to date, our group confirmed the performance of the RS in patients receiving an AI or tamoxifen. Importantly, these data revealed that the prognostic information in the RS and that of clinical features (e.g. nodal status, tumor size and grade) as integrated by Adjuvant! Online were almost entirely independent of one another (Dowsett *et al.* 2010; Fig. 3). This provides the opportunity to derive a single algorithm which integrates the two sets of features and will be more accurate than either alone. A high RS has been found to predict for chemotherapy benefit in hormone receptor-positive early breast cancer (Paik *et al.* 2006, Sparano & Paik 2008). To evaluate this further, the trial assigning individualized options for treatment (TAILORx) is aiming to recruit more than 10 000 patients with lymph node-negative hormone receptor positive breast cancer. Patients with an intermediate RS will be randomly assigned to receive adjuvant chemotherapy or not as well as to receive subsequent endocrine therapy (Sparano 2006).

A genomic-grade signature has been developed to define molecular features of tumor differentiation that might relate to progression and metastasis better than histological grade (Rhodes *et al.* 2004, Sotiriou *et al.* 2006). It consists of a 97-gene signature, which is able to discriminate grade 2 tumors into low and high genomic-grade subgroups with outcomes comparable to histological low- and high-grade tumors.

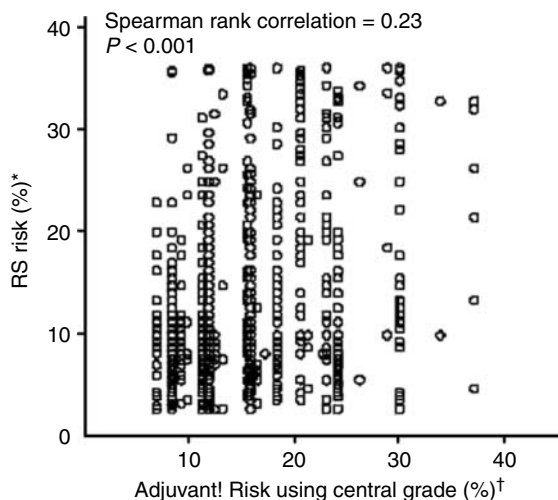


Figure 3 Predicted risk of recurrence by recurrence score (RS) and Adjuvant! Online for patients with ER-positive node-negative disease treated with tamoxifen or anastrozole adjuvant therapy in the absence of chemotherapy ($n=872$). Reprinted with permission. 2008 American Society of Clinical Oncology. All rights reserved. Dowsett M, Cuzick J, Wale C, Forbes J, Mallon EA, Salter J, Quinn E, Dunbier A, Baum M, Buzdar A *et al.* 2010 *Journal of Clinical Oncology* **28** 1829–1834.

The genomic-grade signature was evaluated on different datasets and was found to be better associated with outcome than established clinical parameters (Loi *et al.* 2007) and prediction of relapse under endocrine treatment (Desmedt *et al.* 2009). This signature accentuates the importance of differentiation and particularly proliferation genes in ER-positive breast cancer.

Many other gene signatures have been developed and have undergone validation. One of them is the breast cancer gene expression ratio test, which only measures the ratio of HOXB13 to IL17BR (Ma *et al.* 2006, 2008, Wang *et al.* 2007). A high mRNA expression ratio was associated with a high risk of recurrence in tamoxifen-treated patients. Recently, the accuracy of this test could be improved by including proliferation-associated genes of the molecular grade index (Ma *et al.* 2008), which is an RT-PCR assay consisting of five genes that are able to identify a subgroup of ER-positive patients with a worse outcome despite endocrine therapy. The Rotterdam 76-gene signature was created on the basis of predicting the development of metastatic disease within 5 years using an unselected patient cohort regarding age, tumor size, grade, and hormone receptor status (Wang *et al.* 2005, Loi *et al.* 2007).

These signatures are composed of different gene sets with few overlaying genes, but there is predominance of these associated genes with proliferation. The choice for the oncologist should be made on the basis of the clinical context (e.g. pure prognosis or prognosis in the presence of endocrine treatment; all ages or just young age) and on the biopsy material available (e.g. MammaPrint needs fresh tissue, but some others including RS can use fixed tissue).

Circulating tumor cells and tumor-specific DNA

There is currently a major effort to identify biomarkers which can be obtained with minimally invasive methods and persist beyond surgery. The existence of circulating tumor cells (CTCs) in the blood of cancer patients was first reported in 1869, but only in the last decade has molecular methodology made it possible to detect them reproducibly (Smith *et al.* 1991). In parallel, advances in immunohistochemistry made it possible to identify disseminated tumor cells in the bone marrow.

For breast cancer, a high CTC count at diagnosis of metastasis is described as being a significant negative prognostic factor, and if the number of CTCs does not decrease, patients are likely to progress under

chemotherapy (Cristofanilli *et al.* 2004). The future use of CTC measurements is very probably to predict therapy efficacy and resistance after initial exposure to therapy, and may be beneficial in monitoring response to treatment. Although many reports on the significance of CTCs have been published, in 2007, the American Society of Clinical Oncology tumor marker group concluded that treatment decisions should not be influenced by CTC counts (Harris *et al.* 2007). A particularly attractive concept that is beginning to meet the expectations is the identification of specific biomarkers on the CTCs, e.g. HER2 (Fehm *et al.* 2005).

Another possible approach to improve simplifying breast cancer management is the study of circulating cell-free DNA (cfDNA). This may be either from nuclear or from mitochondrial origin. Increased levels have been detectable in several cancer types, and an association between nuclear cfDNA levels and malignancy as well as tumor size has been described (Catarino *et al.* 2008, Kohler *et al.* 2009). Others report the possibility to screen for PIK3CA mutations in cfDNA (Board *et al.* 2010). Such studies herald a day when the genetic aberrations of an individual's tumor may be used to create absolute specificity for the cfDNA in their blood.

In addition, the occurrence of tumor-specific microRNA species in the tumor and blood of breast cancer patients has been investigated. Specific expression patterns have been described (Iorio *et al.* 2005, Mattie *et al.* 2006), and some were linked to clinicopathological variables (Heneghan *et al.* 2010), but at present further studies are needed to validate the specific function of microRNAs and their possible use as biomarkers.

Conclusions

The fact that breast cancer is not a uniform cancer entity but consists of several different subtypes with different molecular profiles, biological behavior, and risk profiles poses a challenge for the clinical management. Prognostic and predictive factors constitute important tools for the individualization of breast cancer therapy to provide efficient treatment and to spare patients with excellent low-risk profiles from unwanted side effects of overtreatment.

The established clinicopathologic markers, in particular ER and HER2, have clearly defined clinical applicability, but deficiencies in the methodologies of assessment may still affect their use. Additional tools are required to facilitate clinical decision-making processes especially for the optimal treatment of early hormone receptor-positive breast cancer.

Very few of the many individual prognostic markers evaluated are sufficiently powerful on their own to merit clinical use. Some of the multigene signatures are more powerful. Although some already gained the FDA approval, large prospective randomized trials are currently being conducted to evaluate their clinical applicability. A recent finding from our group that an IHC panel of just four frequently used markers (Cuzick *et al.* 2009) was at least as prognostic as the Oncotype RS indicates the need for further studies comparing new methodology with established, less-expensive methodology. We should not be misled by the seductiveness of the new.

Special attention needs to be paid to the design and conduct of clinical trials, which have the potential to validate emerging biomarkers for their clinical application. Careful assay design and validation is an absolute requirement alongside the collection of quality tissue and blood specimen to address the clinical question for which the marker has been developed and selected. If well designed and conducted, these trials have the potential to provide unique collections of clinical specimens, which may be of great use for future biomarker discovery and retrospective evaluation.

Despite the discussion of several emerging biomarkers in this paper, there are others that could have been included such as CYP2D6 polymorphism. However, there is controversy about the reliability of its association with response to tamoxifen because of a widely varying set of clinical reports.

Given the development of new targeted molecular therapies, there will continue to be a need for identifying and devising new markers that will be able to predict for specific response. It will be a challenge for scientists and clinicians to select the most promising ones particularly where overexpression of the target is not required for activity.

With the effort being exploited in this area and the enormous strides being made in characterizing the molecular characteristics of individual cancers, the future should provide us with unique case-specific patterns of biomarkers, which will help to optimize tailored therapies and individualize breast cancer patient care.

Declaration of interest

M T Weigel has no conflict of interest that could be perceived as prejudicing the impartiality of the research reported; M Dowsett receives research funding, honoraria for advisory boards, and lecture fees from AstraZeneca, Novartis, and Roche.

Funding

M Dowsett is grateful for funding from Breakthrough Breast Cancer, Cancer Research UK and the NIHR Royal Marsden Hospital Biomedical Research Centre. M T Weigel is supported by Breakthrough Breast Cancer and the Deutsche Krebshilfe (grant number 108999).

References

- Akli S & Keyomarsi K 2004 Low-molecular-weight cyclin E: the missing link between biology and clinical outcome. *Breast Cancer Research* **6** 188–191. (doi:10.1186/bcr905)
- Anido J, Scaltriti M, Serra JJB, Josefats BS, Todo FR, Baselga J & Arribas J 2006 Biosynthesis of tumorigenic HER2 C-terminal fragments by alternative initiation of translation. *EMBO Journal* **25** 3234–3244. (doi:10.1038/sj.emboj.7601191)
- Anonymous 1998 Tamoxifen for early breast cancer: an overview of the randomised trials. Early Breast Cancer Trialists' Collaborative Group. *Lancet* **351** 1451–1467. (doi:10.1016/S0140-6736(97)11423-4)
- Anonymous 2005 Effects of chemotherapy and hormonal therapy for early breast cancer on recurrence and 15-year survival: an overview of the randomised trials. *Lancet* **365** 1687–1717. (doi:10.1016/S0140-6736(05)66544-0)
- de Azambuja E, Cardoso F, de Castro G Jr, Colozza M, Mano MS, Durbecq V, Sotiriou C, Larsimont D, Piccart-Gebhart MJ & Paesmans M 2007 Ki-67 as prognostic marker in early breast cancer: a meta-analysis of published studies involving 12,155 patients. *British Journal of Cancer* **96** 1504–1513. (doi:10.1038/sj.bjc.6603756)
- Barbareschi M, Pelosio P, Caffo O, Buttitta F, Pellegrini S, Barbazza R, Dalla Palma P, Bevilacqua G & Marchetti A 1997 Cyclin-D1-gene amplification and expression in breast carcinoma: relation with clinicopathologic characteristics and with retinoblastoma gene product, p53 and p21WAF1 immunohistochemical expression. *International Journal of Cancer* **74** 171–174. (doi:10.1002/(SICI)1097-0215(19970422)74:2<171::AID-IJC5>3.0.CO;2-W)
- Bardin A, Boulle N, Lazennec G, Vignon F & Pujol P 2004 Loss of ERbeta expression as a common step in estrogen-dependent tumor progression. *Endocrine-Related Cancer* **11** 537–551. (doi:10.1677/erc.1.00800)
- Bartlett JM, Munro AF, Dunn JA, McConkey C, Jordan S, Twelves CJ, Cameron DA, Thomas J, Campbell FM, Rea DW *et al.* 2010 Predictive markers of anthracycline benefit: a prospectively planned analysis of the UK National Epirubicin Adjuvant Trial (NEAT/BR9601). *Lancet Oncology* **11** 266–274. (doi:10.1016/S1470-2045(10)70006-1)
- Bièche I, Olivi M, Noguès C, Vidaud M & Lidereau R 2002 Prognostic value of CCND1 gene status in sporadic breast tumours, as determined by real-time quantitative PCR assays. *British Journal of Cancer* **86** 580–586. (doi:10.1038/sj.bjc.6600109)
- Bilalović N, Vranić S, Basić H, Tatareović A & Selak I 2005 Immunohistochemical evaluation of cyclin D1 in breast cancer. *Croatian Medical Journal* **46** 382–388.
- Board RE, Wardley AM, Dixon JM, Armstrong AC, Howell S, Renshaw L, Donald E, Greystoke A, Ranson M, Hughes A *et al.* 2010 Detection of *PIK3CA* mutations in circulating free DNA in patients with breast cancer. *Breast Cancer Research and Treatment* **120** 461–467. (doi:10.1007/s10549-010-0747-9)
- Bogaerts J, Cardoso F, Buyse M, Braga S, Loi S, Harrison JA, Bines J, Mook S, Decker N, Ravdin P *et al.* 2006 Gene signature evaluation as a prognostic tool: challenges in the design of the MINDACT trial. *Nature Clinical Practice. Oncology* **3** 540–551. (doi:10.1038/ncononc0591)
- Bortner DM & Rosenberg MP 1997 Induction of mammary gland hyperplasia and carcinomas in transgenic mice expressing human cyclin E. *Molecular and Cellular Biology* **17** 453–459.
- Brown LA, Hoog J, Chin SF, Tao Y, Zayed AA, Chin K, Teschendorff AE, Quackenbush JF, Marioni JC, Leung S *et al.* 2008 ESR1 gene amplification in breast cancer: a common phenomenon? *Nature Genetics* **40** 806–807 (author reply 810–812). (doi:10.1038/ng0708-806)
- Buckley MF, Sweeney KJ, Hamilton JA, Sini RL, Manning DL, Nicholson RI, deFazio A, Watts CK, Musgrove EA & Sutherland RL 1993 Expression and amplification of cyclin genes in human breast cancer. *Oncogene* **8** 2127–2133.
- Buyse M, Loi S, van 't Veer L, Viale G, Delorenzi M, Glas AM, d'Assignies MS, Bergh J, Lidereau R, Ellis P *et al.* 2006 Validation and clinical utility of a 70-gene prognostic signature for women with node-negative breast cancer. *Journal of the National Cancer Institute* **98** 1183–1192. (doi:10.1093/jnci/djj329)
- Byar DP, Sears ME & McGuire WL 1979 Relationship between estrogen receptor values and clinical data in predicting the response to endocrine therapy for patients with advanced breast cancer. *European Journal of Cancer* **15** 299–310. (doi:10.1016/0014-2964(79)90041-0)
- Catarino R, Ferreira MM, Rodrigues H, Coelho A, Nogal A, Sousa A & Medeiros R 2008 Quantification of free circulating tumor DNA as a diagnostic marker for breast cancer. *DNA and Cell Biology* **27** 415–421. (doi:10.1089/dna.2008.0744)
- Chang J, Ormerod M, Powles TJ, Allred DC, Ashley SE & Dowsett M 2000a Apoptosis and proliferation as predictors of chemotherapy response in patients with breast carcinoma. *Cancer* **89** 2145–2152. (doi:10.1002/1097-0142(20001201)89:11<2145::AID-CNCR1>3.0.CO;2-S)
- Chang J, Powles TJ, Allred DC, Ashley SE, Makris A, Gregory RK, Osborne CK & Dowsett M 2000b Prediction of clinical outcome from primary tamoxifen by expression of biologic markers in breast cancer patients. *Clinical Cancer Research* **6** 616–621.
- Cheang MCU, Chia SK, Voduc D, Gao D, Leung S, Snider J, Watson M, Davies S, Bernard PS, Parker JS *et al.* 2009 Ki67 index, HER2 status, and prognosis of patients with luminal B breast cancer. *Journal of the National Cancer Institute* **101** 736–750. (doi:10.1093/jnci/djp082)

- Colleoni M, Viale G, Zahrieh D, Pruneri G, Gentilini O, Veronesi P, Gelber RD, Curigliano G, Torrisi R, Luini A *et al.* 2004 Chemotherapy is more effective in patients with breast cancer not expressing steroid hormone receptors: a study of preoperative treatment. *Clinical Cancer Research* **10** 6622–6628. (doi:10.1158/1078-0432.CCR-04-0380)
- Cristofanilli M, Budd GT, Ellis MJ, Stopeck A, Matera J, Miller MC, Reuben JM, Doyle GV, Allard WJ, Terstappen LW *et al.* 2004 Circulating tumor cells, disease progression, and survival in metastatic breast cancer. *New England Journal of Medicine* **321** 781–791. (doi:10.1056/NEJMoa040766)
- Cuzick J, Dowsett M, Wale C, Salter J, Quinn E, Zablago L, Howell A, Buzdar A & Forbes J 2009 Prognostic value of a combined ER, PgR, Ki67, HER2 immunohistochemical (IHC4) score and comparison with the GHI recurrence score – results from TransATAC. *Cancer Research* **69** 74. (doi:10.1158/0008-5472.SABCS-09-74)
- Desmedt C, Giobbie-Hurder A, Neven P, Paridaens R, Christiaens MR, Smeets A, Lallemand F, Haibe-Kains B, Viale G, Gelber RD *et al.* 2009 The gene expression grade index: a potential predictor of relapse for endocrine-treated breast cancer patients in the BIG 1-98 trial. *BMC Medical Genomics* **2** 40. (doi:10.1186/1755-8794-2-40)
- Dowsett M, Cuzick J, Wale C, Howell T, Houghton J & Baum M 2005a Retrospective analysis of time to recurrence in the ATAC trial according to hormone receptor status: an hypothesis-generating study. *Journal of Clinical Oncology* **23** 7512–7517. (doi:10.1200/JCO.2005.01.4829)
- Dowsett M, Ebbs SR, Dixon JM, Skene A, Griffith C, Boeddinghaus I, Salter J, Detre S, Hills M, Ashley S *et al.* 2005b Biomarker changes during neoadjuvant anastrozole, tamoxifen, or the combination: influence of hormonal status and HER-2 in breast cancer – a study from the IMPACT trialists. *Journal of Clinical Oncology* **23** 2477–2492. (doi:10.1200/JCO.2005.07.559)
- Dowsett M, Smith IE, Ebbs SR, Dixon JM, Skene A, Griffith C, Boeddinghaus I, Salter J, Detre S, Hills M *et al.* 2005c Short-term changes in Ki-67 during neoadjuvant treatment of primary breast cancer with anastrozole or tamoxifen alone or combined correlate with recurrence-free survival. *Clinical Cancer Research* **11** 951s–958s.
- Dowsett M, Houghton J, Iden C, Salter J, Farndon J, A'Hern R, Sainsbury R & Baum M 2006a Benefit from adjuvant tamoxifen therapy in primary breast cancer patients according oestrogen receptor, progesterone receptor, EGF receptor and HER2 status. *Annals of Oncology* **17** 818–826. (doi:10.1093/annonc/mdl016)
- Dowsett M, Smith IE, Ebbs SR, Dixon JM, Skene A, Griffith C, Boeddinghaus I, Salter J, Detre S, Hills M *et al.* 2006b Proliferation and apoptosis as markers of benefit in neoadjuvant endocrine therapy of breast cancer. *Clinical Cancer Research* **12** 1024s–1030s. (doi:10.1158/1078-0432.CCR-05-2127)
- Dowsett M, Goldhirsch A, Hayes DF, Senn HJ, Wood W & Viale G 2007a International web-based consultation on priorities for translational breast cancer research. *Breast Cancer Research* **9** R81. (doi:10.1186/bcr1798)
- Dowsett M, Smith IE, Ebbs SR, Dixon JM, Skene A, A'Hern R, Salter J, Detre S, Hills M & Walsh G 2007b Prognostic value of Ki67 expression after short-term presurgical endocrine therapy for primary breast cancer. *Journal of the National Cancer Institute* **99** 167–170. (doi:10.1093/jnci/djk020)
- Dowsett M, Allred C, Knox J, Quinn E, Salter J, Wale C, Cuzick J, Houghton J, Williams N, Mallon E *et al.* 2008 Relationship between quantitative estrogen and progesterone receptor expression and human epidermal growth factor receptor 2 (HER-2) status with recurrence in the arimidex, tamoxifen, alone or in combination trial. *Journal of Clinical Oncology* **26** 1059–1065. (doi:10.1200/JCO.2007.12.9437)
- Dowsett M, Procter M, McCaskill-Stevens W, de Azambuja E, Dafni U, Rueschoff J, Jordan B, Dolci S, Abramovitz M, Stoss O *et al.* 2009 Disease-free survival according to degree of HER2 amplification for patients treated with adjuvant chemotherapy with or without 1 year of trastuzumab: the HERA trial. *Journal of Clinical Oncology* **27** 2962–2969. (doi:10.1200/JCO.2008.19.7939)
- Dowsett M, Cuzick J, Wale C, Forbes J, Mallon EA, Salter J, Quinn E, Dunbier A, Baum M, Buzdar A *et al.* 2010 Prediction of risk of distant recurrence using the 21-gene recurrence score in node-negative and node-positive postmenopausal patients with breast cancer treated with anastrozole or tamoxifen: a TransATAC study. *Journal of Clinical Oncology* **28** 1829–1834. (doi:10.1200/JCO.2009.24.4798)
- Dressler LG, Berry DA, Broadwater G, Cowan D, Cox K, Griffin S, Miller A, Tse J, Novotny D, Persons DL *et al.* 2005 Comparison of HER2 status by fluorescence *in situ* hybridization and immunohistochemistry to predict benefit from dose escalation of adjuvant doxorubicin-based therapy in node-positive breast cancer patients. *Journal of Clinical Oncology* **23** 4287–4297. (doi:10.1200/JCO.2005.11.012)
- Elledge RM, Green S, Pugh R, Allred DC, Clark GM, Hill J, Ravdin P, Martino S & Osborne CK 2000 Estrogen receptor (ER) and progesterone receptor (PgR), by ligand-binding assay compared with ER, PgR and pS2, by immuno-histochemistry in predicting response to tamoxifen in metastatic breast cancer: a Southwest Oncology Group Study. *International Journal of Cancer* **89** 111–117. (doi:10.1002/(SICI)1097-0215(20000320)89:2 <111::AID-IJC2>3.0.CO;2-W)
- Enmark E, Pelto-Huikko M, Grandien K, Lagercrantz S, Lagercrantz J, Fried G, Nordenskjöld M & Gustafsson JA 1997 Human estrogen receptor beta-gene structure, chromosomal localization, and expression pattern. *Journal of Clinical Endocrinology and Metabolism* **82** 4258–4265. (doi:10.1210/jc.82.12.4258)

- Faneyte IF, Schrama JG, Peterse JL, Remijnse PL, Rodenhuis S & van de Vijver MJ 2003 Breast cancer response to neoadjuvant chemotherapy: predictive markers and relation with outcome. *British Journal of Cancer* **88** 406–412. (doi:10.1038/sj.bjc.6600749)
- Fehm T, Solomayer EF, Meng S, Tucker T, Lane N, Wang J & Gebauer G 2005 Methods for isolating circulating epithelial cells and criteria for their classification as carcinoma cells. *Cytotherapy* **7** 171–185. (doi:10.1080/14653240510027082)
- Gennari A, Sormani MP, Pronzato P, Puntoni M, Colozza M, Pfeffer U & Bruzzi P 2008 HER2 status and efficacy of adjuvant anthracyclines in early breast cancer: a pooled analysis of randomized trials. *Journal of the National Cancer Institute* **100** 14–20. (doi:10.1093/jnci/djm252)
- Gerdes J, Schwab U, Lemke H & Stein H 1983 Production of a mouse monoclonal antibody reactive with a human nuclear antigen associated with cell proliferation. *International Journal of Cancer* **31** 13–20. (doi:10.1002/ijc.2910310104)
- Gillett C, Fantl V, Smith R, Fisher C, Bartek J, Dickson C, Barnes D & Peters G 1994 Amplification and overexpression of cyclin D1 in breast cancer detected by immunohistochemical staining. *Cancer Research* **54** 1812–1817.
- Gillett C, Smith P, Gregory W, Richards M, Millis R, Peters G & Barnes D 1996 Cyclin D1 and prognosis in human breast cancer. *International Journal of Cancer* **69** 92–99. (doi:10.1002/(SICI)1097-0215(19960422)69:2<92::AID-IJC4>3.0.CO;2-Q)
- Goldhirsch A, Ingle JN, Gelber RD, Coates AS, Thürlimann B & Senn H-J 2009 Thresholds for therapies: highlights of the St Gallen International Expert Consensus on the primary therapy of early breast cancer 2009. *Annals of Oncology* **20** 1319–1329. (doi:10.1093/annonc/mdp322)
- Haerslev T, Jacobsen GK & Zedeler K 1996 Correlation of growth fraction by Ki-67 and proliferating cell nuclear antigen (PCNA) immunohistochemistry with histopathological parameters and prognosis in primary breast carcinomas. *Breast Cancer Research and Treatment* **37** 101–113. (doi:10.1007/BF01806492)
- Hammond MEF, Hayes DF, Dowsett M, Allred DC, Hagerty KL, Badve S, Fitzgibbons PL, Francis G, Goldstein NS, Hayes M *et al.* 2010 American Society of Clinical Oncology/College of American Pathologists guideline recommendations for immunohistochemical testing of estrogen and progesterone receptors in breast cancer. *Journal of Clinical Oncology* **28** 2784–2795. (doi:10.1200/JCO.2009.25.6529)
- Harris L, Fritsche H, Mennel R, Norton L, Ravdin P, Taube S, Somerfield MR, Hayes DF & Bast RC Jr 2007 American Society of Clinical Oncology 2007 update of recommendations for the use of tumor markers in breast cancer. *Journal of Clinical Oncology* **25** 5287–5312. (doi:10.1200/JCO.2007.14.2364)
- Hayes DF, Bast RC, Desch CE, Fritsche H Jr, Kemeny NE, Jessup JM, Locker GY, Macdonald JS, Mennel RG, Norton L *et al.* 1996 Tumor marker utility grading system: a framework to evaluate clinical utility of tumor markers. *Journal of the National Cancer Institute* **88** 1456–1466. (doi:10.1093/jnci/88.20.1456)
- Hayes DF, Thor AD, Dressler LG, Weaver D, Edgerton S, Cowan D, Broadwater G, Goldstein LJ, Martino S, Ingle JN *et al.* 2007 HER2 and response to paclitaxel in node-positive breast cancer. *New England Journal of Medicine* **357** 1496–1506. (doi:10.1056/NEJMoa071167)
- Heneghan HM, Miller N, Lowery AJ, Sweeney KJ, Newell J & Kerin MJ 2010 Circulating microRNAs as novel minimally invasive biomarkers for breast cancer. *Annals of Surgery* **251** 499–505. (doi:10.1097/SLA.0b013e3181cc939f)
- Herynk MH & Fuqua SA 2004 Estrogen receptor mutations in human disease. *Endocrine Reviews* **25** 869–898. (doi:10.1210/er.2003-0010)
- Holst F, Stahl PR, Ruiz C, Hellwinkel O, Jehan Z, Wendland M, Lebeau A, Terracciano L, Al-Kuraya K, Jänicke F *et al.* 2007 Estrogen receptor alpha (ESR1) gene amplification is frequent in breast cancer. *Nature Genetics* **39** 655–660. (doi:10.1038/ng2006)
- Hopp TA, Weiss HL, Parra IS, Cui Y, Osborne CK & Fuqua SA 2004 Low levels of estrogen receptor beta protein predict resistance to tamoxifen therapy in breast cancer. *Clinical Cancer Research* **10** 7490–7499. (doi:10.1158/1078-0432.CCR-04-1114)
- Horlings HM, Bergamaschi A, Nordgard SH, Kim YH, Han W, Noh DY, Salari K, Joosse SA, Rey F, Lingjaerde OC *et al.* 2008 ESR1 gene amplification in breast cancer: a common phenomenon? *Nature Genetics* **40** 807–808 (author reply 810–812). (doi:10.1038/ng0708-807)
- Howell A, Cuzick J, Baum M, Buzdar A, Dowsett M, Forbes JF, Hoctin-Boes G, Houghton J, Locker GY, Tobias JS *et al.* 2005 Results of the ATAC (arimidex, tamoxifen, alone or in combination) trial after completion of 5 years' adjuvant treatment for breast cancer. *Lancet* **365** 60–62. (doi:10.1016/S0140-6736(05)74803-0)
- Hui R, Cornish AL, McClelland RA, Robertson JF, Blamey RW, Musgrove EA, Nicholson RI & Sutherland RL 1996 Cyclin D1 and estrogen receptor messenger RNA levels are positively correlated in primary breast cancer. *Clinical Cancer Research* **2** 923–928.
- Hwang TS, Han HS, Hong YC, Lee HJ & Paik NS 2003 Prognostic value of combined analysis of cyclin D1 and estrogen receptor status in breast cancer patients. *Pathology International* **53** 74–80. (doi:10.1046/j.1440-1827.2003.01441.x)
- Iorio MV, Ferracin M, Liu CG, Veronese A, Spizzo R, Sabbioni S, Magri E, Pedriali M, Fabbri M, Campiglio M *et al.* 2005 MicroRNA gene expression deregulation in human breast cancer. *Cancer Research* **65** 7065–7070. (doi:10.1158/0008-5472.CAN-05-1783)
- Jares P, Rey MJ, Fernández PL, Campo E, Nadal A, Muñoz M, Mallofré C, Muntané J, Nayach I, Estapé J *et al.* 1997 Cyclin D1 and retinoblastoma gene expression in human breast carcinoma: correlation with tumour proliferation

- and oestrogen receptor status. *Journal of Pathology* **182** 160–166. (doi:10.1002/(SICI)1096-9896(199706)182:2 <160::AID-PATH814>3.0.CO;2-2)
- Järvinen TA, Pelto-Huikko M, Holli K & Isola J 2000 Estrogen receptor beta is coexpressed with ERalpha and PR and associated with nodal status, grade, and proliferation rate in breast cancer. *American Journal of Pathology* **156** 29–35.
- Jensen EV, Cheng G, Palmieri C, Saji S, Mäkelä S, Van Noorden S, Wahlström T, Warner M, Coombes RC & Gustafsson JA 2001 Estrogen receptors and proliferation markers in primary and recurrent breast cancer. *PNAS* **98** 15197–15202. (doi:10.1073/pnas.211556298)
- Jirström K, Stendahl M, Rydén L, Kronblad A, Bendahl PO, Stål O & Landberg G 2005 Adverse effect of adjuvant tamoxifen in premenopausal breast cancer with *cyclin D1* gene amplification. *Cancer Research* **65** 8009–8016. (doi:10.1158/0008-5472.CAN-05-0746)
- Jones RL, Salter J, A'Hern R, Nerurkar A, Parton M, Reis-Filho JS, Smith IE & Dowsett M 2009 The prognostic significance of Ki67 before and after neoadjuvant chemotherapy in breast cancer. *Breast Cancer Research and Treatment* **116** 53–68. (doi:10.1007/s10549-008-0081-7)
- Keyomarsi K & Pardee AB 1993 Redundant cyclin over-expression and gene amplification in breast cancer cells. *PNAS* **90** 1112–1116. (doi:10.1073/pnas.90.3.1112)
- Keyomarsi K, O'Leary N, Molnar G, Lees E, Fingert HJ & Pardee AB 1994 Cyclin E, a potential prognostic marker for breast cancer. *Cancer Research* **54** 380–385.
- Keyomarsi K, Tucker SL, Buchholz TA, Callister M, Ding Y, Hortobagyi GN, Bedrosian I, Knickerbocker C, Toyofuku W, Lowe M *et al.* 2002 Cyclin E and survival in patients with breast cancer. *New England Journal of Medicine* **347** 1566–1575. (doi:10.1056/NEJMoa021153)
- Koff A, Giordano A, Desai D, Yamashita K, Harper JW, Elledge S, Nishimoto T, Morgan DO, Franza BR & Roberts JM 1992 Formation and activation of a cyclin E–cdk2 complex during the G₁ phase of the human cell cycle. *Science* **257** 1689–1694. (doi:10.1126/science.1388288)
- Kohler C, Radpour R, Barekati Z, Asadollahi R, Bitzer J, Wight E, Bürki N, Diesch C, Holzgreve W & Zhong XY 2009 Levels of plasma circulating cell free nuclear and mitochondrial DNA as potential biomarkers for breast tumors. *Molecular Cancer* **8** 105. (doi:10.1186/1476-4598-8-105)
- Leygue E, Dotzlaw H, Watson PH & Murphy LC 1998 Altered estrogen receptor alpha and beta messenger RNA expression during human breast tumorigenesis. *Cancer Research* **58** 3197–3201.
- Liu Y, Gao H, Marstrand TT, Ström A, Valen E, Sandelin A, Gustafsson JA & Dahlman-Wright K 2008 The genome landscape of ERalpha- and ERbeta-binding DNA regions. *PNAS* **105** 2604–2609. (doi:10.1073/pnas.0712085105)
- Loi S, Haibe-Kains B, Desmedt C, Lallemand F, Tutt AM, Gillet C, Ellis P, Harris A, Bergh J, Foekens JA *et al.* 2007 Definition of clinically distinct molecular subtypes in estrogen receptor-positive breast carcinomas through genomic grade. *Journal of Clinical Oncology* **25** 1239–1246. (doi:10.1200/JCO.2006.07.1522)
- Lopez F, Belloc F, Lacombe F, Dumain P, Reiffers J, Bernard P & Boisseau MR 1991 Modalities of synthesis of Ki67 antigen during the stimulation of lymphocytes. *Cytometry* **12** 42–49. (doi:10.1002/cyto.990120107)
- Ma X-J, Hilsenbeck SG, Wang W, Ding L, Sgroi DC, Bender RA, Osborne CK, Allred DC & Erlander MG 2006 The HOXB13:IL17BR expression index is a prognostic factor in early-stage breast cancer. *Journal of Clinical Oncology* **24** 4611–4619. (doi:10.1200/JCO.2006.06.6944)
- Ma XJ, Salunga R, Dahiya S, Wang W, Carney E, Durbecq V, Harris A, Goss P, Sotiriou C, Erlander M *et al.* 2008 A five-gene molecular grade index and HOXB13:IL17BR are complementary prognostic factors in early stage breast cancer. *Clinical Cancer Research* **14** 2601–2608. (doi:10.1158/1078-0432.CCR-07-5026)
- Mass RD, Press MF, Anderson S, Cobleigh MA, Vogel CL, Dybdal N, Leiberman G & Slamon DJ 2005 Evaluation of clinical outcomes according to HER2 detection by fluorescence *in situ* hybridization in women with metastatic breast cancer treated with trastuzumab. *Clinical Breast Cancer* **6** 240–246. (doi:10.3816/CBC.2005.n.026)
- Matsushime H, Quelle DE, Shurtleff SA, Shibuya M, Sherr CJ & Kato JY 1994 D-type cyclin-dependent kinase activity in mammalian cells. *Molecular and Cellular Biology* **14** 2066–2076.
- Matthews J & Gustafsson JA 2003 Estrogen signaling: a subtle balance between ER alpha and ER beta. *Molecular Interventions* **3** 281–292. (doi:10.1124/mi.3.5.281)
- Mattie MD, Benz CC, Bowers J, Sensinger K, Wong L, Scott GK, Fedele V, Ginzinger D, Getts R & Haqq C 2006 Optimized high-throughput microRNA expression profiling provides novel biomarker assessment of clinical prostate and breast cancer biopsies. *Molecular Cancer* **5** 24. (doi:10.1186/1476-4598-5-24)
- McShane LM, Altman DG, Sauerbrei W, Taube SE, Gion M & Clark GM 2005 Reporting recommendations for tumor marker prognostic studies. *Journal of Clinical Oncology* **23** 9067–9072. (doi:10.1200/JCO.2004.01.0454)
- Michalides R, Hageman P, van Tinteren H, Houben L, Wientjens E, Klompaker R & Peterse J 1996 A clinicopathological study on overexpression of cyclin D1 and of p53 in a series of 248 patients with operable breast cancer. *British Journal of Cancer* **73** 728–734.
- Musgrove EA, Hamilton JA, Lee CS, Sweeney KJ, Watts CK & Sutherland RL 1993 Growth factor, steroid, and steroid antagonist regulation of cyclin gene expression associated with changes in T-47D human breast cancer cell cycle progression. *Molecular and Cellular Biology* **13** 3577–3587.
- Muss HB, Thor AD, Berry DA, Kute T, Liu ET, Koerner F, Cirrincione CT, Budman DR, Wood WC, Barcos M *et al.* 1994 c-erbB-2 expression and response to adjuvant

- therapy in women with node-positive early breast cancer. *New England Journal of Medicine* **330** 1260–1266. (doi:10.1056/NEJM199405053301802)
- Nicholson RI, McClelland RA, Finlay P, Eaton CL, Gullick WJ, Dixon AR, Robertson JF, Ellis IO & Blamey RW 1993 Relationship between EGF-R, c-erbB-2 protein expression and Ki67 immunostaining in breast cancer and hormone sensitivity. *European Journal of Cancer* **29A** 1018–1023. (doi:10.1016/S0959-8049(05)80215-1)
- Nielsen NH, Arnerlöv C, Emdin SO & Landberg G 1996 Cyclin E overexpression, a negative prognostic factor in breast cancer with strong correlation to oestrogen receptor status. *British Journal of Cancer* **74** 874–880.
- Omoto Y, Inoue S, Ogawa S, Toyama T, Yamashita H, Muramatsu M, Kobayashi S & Iwase H 2001 Clinical value of the wild-type estrogen receptor beta expression in breast cancer. *Cancer Letters* **163** 207–212. (doi:10.1016/S0304-3835(00)00680-7)
- Ormandy CJ, Musgrove EA, Hui R, Daly RJ & Sutherland RL 2003 Cyclin D1, EMS1 and 11q13 amplification in breast cancer. *Breast Cancer Research and Treatment* **78** 323–335. (doi:10.1023/A:1023033708204)
- Paik S, Shak S, Tang G, Kim C, Baker J, Cronin M, Baehner FL, Walker MG, Watson D, Park T *et al.* 2004 A multigene assay to predict recurrence of tamoxifen-treated, node-negative breast cancer. *New England Journal of Medicine* **351** 2817–2826. (doi:10.1056/NEJMoa041588)
- Paik S, Tang G, Shak S, Kim C, Baker J, Kim W, Cronin M, Baehner FL, Watson D, Bryant J *et al.* 2006 Gene expression and benefit of chemotherapy in women with node-negative, estrogen receptor-positive breast cancer. *Journal of Clinical Oncology* **24** 3726–3734. (doi:10.1200/JCO.2005.04.7985)
- Paik S, Kim C & Wolmark N 2008 HER2 status and benefit from adjuvant trastuzumab in breast cancer. *New England Journal of Medicine* **358** 1409–1411. (doi:10.1056/NEJMc0801440)
- Park BW, Kim KS, Heo MK, Ko SS, Hong SW, Yang WI, Kim JH, Kim GE & Lee KS 2003 Expression of estrogen receptor-beta in normal mammary and tumor tissues: is it protective in breast carcinogenesis? *Breast Cancer Research and Treatment* **80** 79–85. (doi:10.1023/A:1024406223619)
- Pegram MD, Konecny G & Slamon DJ 2000 The molecular and cellular biology of HER2/neu gene amplification/overexpression and the clinical development of herceptin (trastuzumab) therapy for breast cancer. *Cancer Treatment and Research* **103** 57–75.
- Perou CM, Sørlie T, Eisen MB, van de Rijn M, Jeffrey SS, Rees CA, Pollack JR, Ross DT, Johnsen H, Akslen LA *et al.* 2000 Molecular portraits of human breast tumours. *Nature* **406** 747–752. (doi:10.1038/35021093)
- Reis-Filho JS, Drury S, Lambros MB, Marchio C, Johnson N, Natrajan R, Salter J, Levey P, Fletcher O, Peto J *et al.* 2008 ESR1 gene amplification in breast cancer: a common phenomenon? *Nature Genetics* **40** 809–810 (author reply 810–812). (doi:10.1038/ng0708-809b)
- Rhodes DR, Yu J, Shanker K, Deshpande N, Varambally R, Ghosh D, Barrette T, Pandey A & Chinnaiyan AM 2004 Large-scale meta-analysis of cancer microarray data identifies common transcriptional profiles of neoplastic transformation and progression. *PNAS* **101** 9309–9314. (doi:10.1073/pnas.0401994101)
- Ring A & Dowsett M 2004 Mechanisms of tamoxifen resistance. *Endocrine-Related Cancer* **11** 643–658. (doi:10.1677/erc.1.00776)
- Ring AE, Smith IE, Ashley S, Fulford LG & Lakhani SR 2004 Oestrogen receptor status, pathological complete response and prognosis in patients receiving neoadjuvant chemotherapy for early breast cancer. *British Journal of Cancer* **91** 2012–2017. (doi:10.1038/sj.bjc.6602235)
- Roger P, Sahla ME, Mäkelä S, Gustafsson JA, Baldet P & Rochefort H 2001 Decreased expression of estrogen receptor beta protein in proliferative preinvasive mammary tumors. *Cancer Research* **61** 2537–2541.
- Romond EH, Perez EA, Bryant J, Suman VJ, Geyer CE Jr, Davidson NE, Tan-Chiu E, Martino S, Paik S & Kaufman PA 2005 Trastuzumab plus adjuvant chemotherapy for operable HER2-positive breast cancer. *New England Journal of Medicine* **353** 1673–1684. (doi:10.1056/NEJMoa052122)
- Rudolph P, Olsson H, Bonatz G, Ratjen V, Bolte H, Baldetorp B, Fernö M, Parwaresch R & Alm P 1999 Correlation between p53, c-erbB-2, and topoisomerase II alpha expression, DNA ploidy, hormonal receptor status and proliferation in 356 node-negative breast carcinomas: prognostic implications. *Journal of Pathology* **187** 207–216. (doi:10.1002/(SICI)1096-9896(199901)187:2<207::AID-PATH223>3.0.CO;2-U)
- Scaltriti M, Rojo F, Ocaña A, Anido J, Guzman M, Cortes J, Di Cosimo S, Matias-Guiu X, Ramon y Cajal S, Arribas J *et al.* 2007 Expression of p95HER2, a truncated form of the HER2 receptor, and response to anti-HER2 therapies in breast cancer. *Journal of the National Cancer Institute* **99** 628–638. (doi:10.1093/jnci/djk134)
- Seshadri R, Lee CS, Hui R, McCaul K, Horsfall DJ & Sutherland RL 1996 Cyclin D1 amplification is not associated with reduced overall survival in primary breast cancer but may predict early relapse in patients with features of good prognosis. *Clinical Cancer Research* **2** 1177–1184.
- Skliris GP, Munot K, Bell SM, Carder PJ, Lane S, Horgan K, Lansdown MR, Parkes AT, Hanby AM, Markham AF *et al.* 2003 Reduced expression of oestrogen receptor beta in invasive breast cancer and its re-expression using DNA methyl transferase inhibitors in a cell line model. *Journal of Pathology* **201** 213–220. (doi:10.1002/path.1436)
- Skliris GP, Leygue E, Curtis-Snell L, Watson PH & Murphy LC 2006 Expression of oestrogen receptor-beta in

- oestrogen receptor-alpha negative human breast tumours. *British Journal of Cancer* **95** 616–626. (doi:10.1038/sj.bjc.6603295)
- Slamon DJ, Clark GM, Wong SG, Levin WJ, Ullrich A & McGuire WL 1987 Human breast cancer: correlation of relapse and survival with amplification of the HER-2/neu oncogene. *Science* **235** 177–182. (doi:10.1126/science.3798106)
- Smith ML & Seo YR 2000 Sensitivity of cyclin E-overexpressing cells to cisplatin/taxol combinations. *Anticancer Research* **20** 2537–2539.
- Smith B, Selby P, Southgate J, Pittman K, Bradley C & Blair GE 1991 Detection of melanoma cells in peripheral blood by means of reverse transcriptase and polymerase chain reaction. *Lancet* **338** 1227–1229. (doi:10.1016/0140-6736(91)92100-G)
- Smith I, Procter M, Gelber RD, Guillaume S, Feyereislova A, Dowsett M, Goldhirsch A, Untch M, Mariani G, Baselga J *et al.* 2007 2-year follow-up of trastuzumab after adjuvant chemotherapy in HER2-positive breast cancer: a randomised controlled trial. *Lancet* **369** 29–36. (doi:10.1016/S0140-6736(07)60028-2)
- Sørli T, Perou CM, Tibshirani R, Aas T, Geisler S, Johnsen H, Hastie T, Eisen MB, van de Rijn M, Jeffrey SS *et al.* 2001 Gene expression patterns of breast carcinomas distinguish tumor subclasses with clinical implications. *PNAS* **98** 10869–10874. (doi:10.1073/pnas.191367098)
- Sørli T, Tibshirani R, Parker J, Hastie T, Marron JS, Nobel A, Deng S, Johnsen H, Pesich R, Geisler S *et al.* 2003 Repeated observation of breast tumor subtypes in independent gene expression data sets. *PNAS* **100** 8418–8423. (doi:10.1073/pnas.0932692100)
- Sotiriou C & Pusztai L 2009 Gene-expression signatures in breast cancer. *New England Journal of Medicine* **360** 790–800. (doi:10.1056/NEJMra0801289)
- Sotiriou C, Neo S-Y, McShane LM, Korn EL, Long PM, Jazaeri A, Martiat P, Fox SB, Harris AL & Liu ET 2003 Breast cancer classification and prognosis based on gene expression profiles from a population-based study. *PNAS* **100** 10393–10398. (doi:10.1073/pnas.1732912100)
- Sotiriou C, Wirapati P, Loi S, Harris A, Fox S, Smeds J, Nordgren H, Farmer P, Praz V, Haibe-Kains B *et al.* 2006 Gene expression profiling in breast cancer: understanding the molecular basis of histologic grade to improve prognosis. *Journal of the National Cancer Institute* **98** 262–272. (doi:10.1093/jnci/djj052)
- Sparano JA 2006 TAILORx: trial assigning individualized options for treatment (Rx). *Clinical Breast Cancer* **7** 347–350. (doi:10.3816/CBC.2006.n.051)
- Sparano JA & Paik S 2008 Development of the 21-gene assay and its application in clinical practice and clinical trials. *Journal of Clinical Oncology* **26** 721–728. (doi:10.1200/JCO.2007.15.1068)
- Speirs V, Malone C, Walton DS, Kerin MJ & Atkin SL 1999 Increased expression of estrogen receptor beta mRNA in tamoxifen-resistant breast cancer patients. *Cancer Research* **59** 5421–5424.
- Stendahl M, Kronblad A, Rydén L, Emdin S, Bengtsson NO & Landberg G 2004 Cyclin D1 overexpression is a negative predictive factor for tamoxifen response in postmenopausal breast cancer patients. *British Journal of Cancer* **90** 1942–1948. (doi:10.1038/sj.bjc.6601831)
- Ström A, Hartman J, Foster JS, Kietz S, Wimalasena J & Gustafsson JA 2004 Estrogen receptor beta inhibits 17beta-estradiol-stimulated proliferation of the breast cancer cell line T47D. *PNAS* **101** 1566–1571. (doi:10.1073/pnas.0308319100)
- Stuart-Harris R, Caldas C, Pinder SE & Pharaoh P 2008 Proliferation markers and survival in early breast cancer: a systematic review and meta-analysis of 85 studies in 32,825 patients. *Breast* **17** 323–334. (doi:10.1016/j.breast.2008.02.002)
- Trihita H, Murray S, Price K, Gelber RD, Golouh R, Goldhirsch A, Coates AS, Collins J, Castiglione-Gertsch M & Gusterson BA 2003 Ki-67 expression in breast carcinoma: its association with grading systems, clinical parameters, and other prognostic factors – a surrogate marker? *Cancer* **97** 1321–1331. (doi:10.1002/cncr.11188)
- Umekita Y, Souda M, Ohi Y, Sagara Y, Rai Y, Takahama T & Yoshida H 2006 Expression of wild-type estrogen receptor beta protein in human breast cancer: specific correlation with HER2/neu overexpression. *Pathology International* **56** 423–427. (doi:10.1111/j.1440-1827.2006.01983.x)
- Urruticoechea A, Smith IE & Dowsett M 2005 Proliferation marker Ki-67 in early breast cancer. *Journal of Clinical Oncology* **23** 7212–7220. (doi:10.1200/JCO.2005.07.501)
- van 't Veer LJ, Dai H, van de Vijver MJ, He YD, Hart AA, Mao M, Peterse HL, van der Kooy K, Marton MJ, Witteveen AT *et al.* 2002 Gene expression profiling predicts clinical outcome of breast cancer. *Nature* **415** 530–536. (doi:10.1038/415530a)
- Viale G, Regan MM, Maiorano E, Mastropasqua MG, Dell'Orto P, Rasmussen BB, Raffoul J, Neven P, Orosz Z, Braye S *et al.* 2007 Prognostic and predictive value of centrally reviewed expression of estrogen and progesterone receptors in a randomized trial comparing letrozole and tamoxifen adjuvant therapy for postmenopausal early breast cancer: BIG 1-98. *Journal of Clinical Oncology* **25** 3846–3852. (doi:10.1200/JCO.2007.11.9453)
- van de Vijver MJ, He YD, van 't Veer LJ, Dai H, Hart AA, Voskuil DW, Schreiber GJ, Peterse JL, Roberts C, Marton MJ *et al.* 2002 A gene-expression signature as a predictor of survival in breast. *New England Journal of Medicine* **347** 1999–2009. (doi:10.1056/NEJMoa021967)
- Wang QS, Sabourin CL, Wang H & Stoner GD 1996 Overexpression of cyclin D1 and cyclin E in N-nitrosomethylbenzylamine-induced rat esophageal tumorigenesis. *Carcinogenesis* **17** 1583–1588. (doi:10.1093/carcin/17.8.1583)
- Wang Y, Klijn JG, Zhang Y, Sieuwerts AM, Look MP, Yang F, Talantov D, Timmermans M, Meijer-van Gelder ME & Yu J 2005 Gene-expression profiles to predict distant

- metastasis of lymph-node-negative primary breast cancer. *Lancet* **365** 671–679. (doi:10.1016/S0140-6736(05)17947-1)
- Wang Z, Dahiya S, Provencher H, Muir B, Carney E, Coser K, Shioda T, Ma XJ & Sgroi DC 2007 The prognostic biomarkers HOXB13, IL17BR, and CHDH are regulated by estrogen in breast cancer. *Clinical Cancer Research* **13** 6327–6334. (doi:10.1158/1078-0432.CCR-07-0310)
- Widakowich C, Dinh P, de Azambuja E, Awada A & Piccart-Gebhart M 2008 HER-2 positive breast cancer: what else beyond trastuzumab-based therapy? *Anti-Cancer Agents in Medicinal Chemistry* **8** 488–496. (doi:10.2174/187152008784533062)
- Wingate H, Puskas A, Duong M, Bui T, Richardson D, Liu Y, Tucker SL, Van Pelt C, Meijer L, Hunt K *et al.* 2009 Low molecular weight cyclin E is specific in breast cancer and is associated with mechanisms of tumor progression. *Cell Cycle* **8** 1062–1068.
- Wolff AC, Hammond ME, Schwartz JN, Hagerty KL, Allred DC, Cote RJ, Dowsett M, Fitzgibbons PL, Hanna WM, Langer A *et al.* 2007 American Society of Clinical Oncology/College of American Pathologists guideline recommendations for human epidermal growth factor receptor 2 testing in breast cancer. *Journal of Clinical Oncology* **25** 118–145. (doi:10.1200/JCO.2006.09.2775)
- Zwijnsen RM, Wientjens E, Klompmaker R, van der Sman J, Bernards R & Michalides RJ 1997 CDK-independent activation of estrogen receptor by cyclin D1. *Cell* **88** 405–415. (doi:10.1016/S0092-8674(00)81879-6)