

**GIM** GRUPPO  
ITALIANO  
MAMMELLA

Ph. Courtesy Andrea Carloni

## Riunione Annuale

Le sfide della ricerca sul carcinoma mammario

**24 - 25** SETTEMBRE 2019

**TRIESTE**

Savoia Excelsior Palace Trieste - Starhotels Collezione  
Riva del Mandracchio, 4



**GIRO DI BOA**  
REGISTRI E STUDI OSSERVAZIONALI



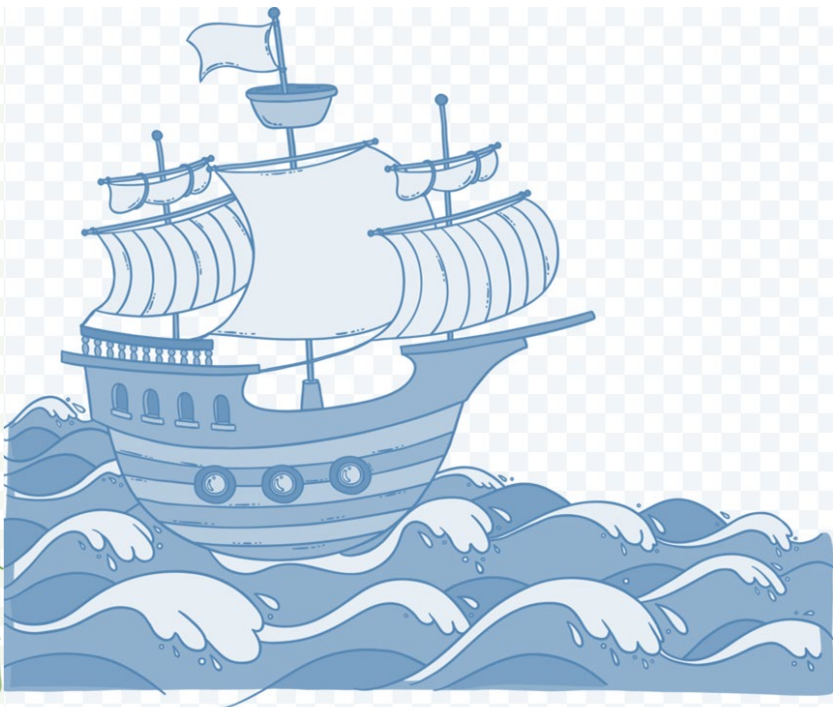
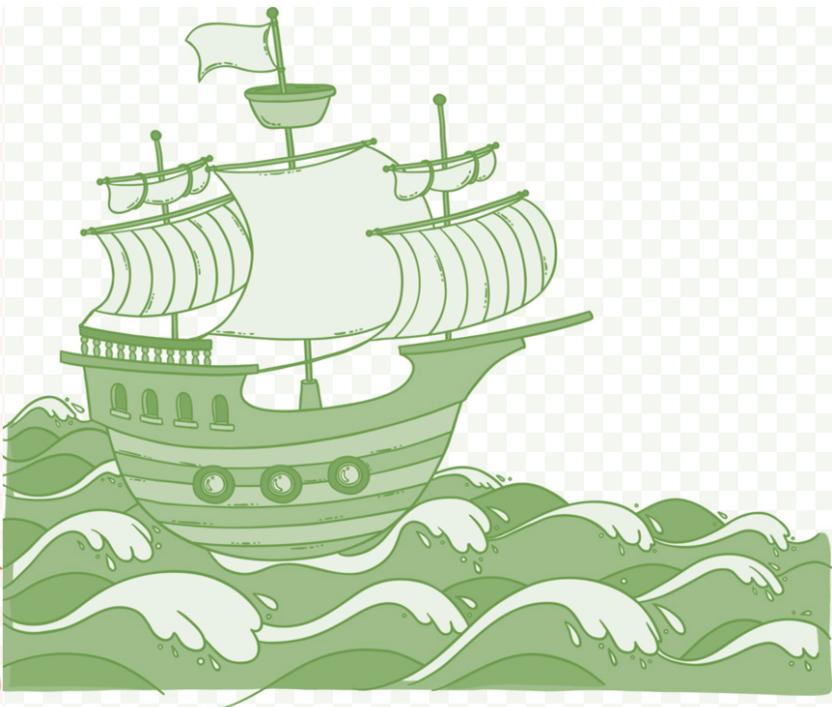
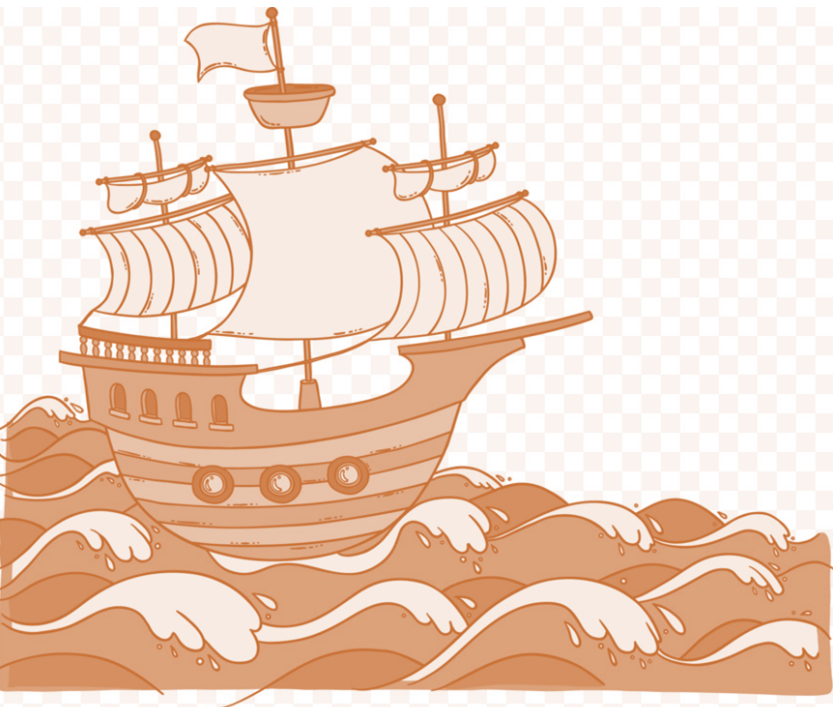
**Le nuove proposte**

**MARTA BONOTTO** Udine

**GIM** GRUPPO  
ITALIANO  
MAMMELLA

**NEW**

# Le tre nuove proposte



**NEW**

# Perché "imbarcarsi"?



**NEW**

# Niente di meglio di uno studio osservazionale ...



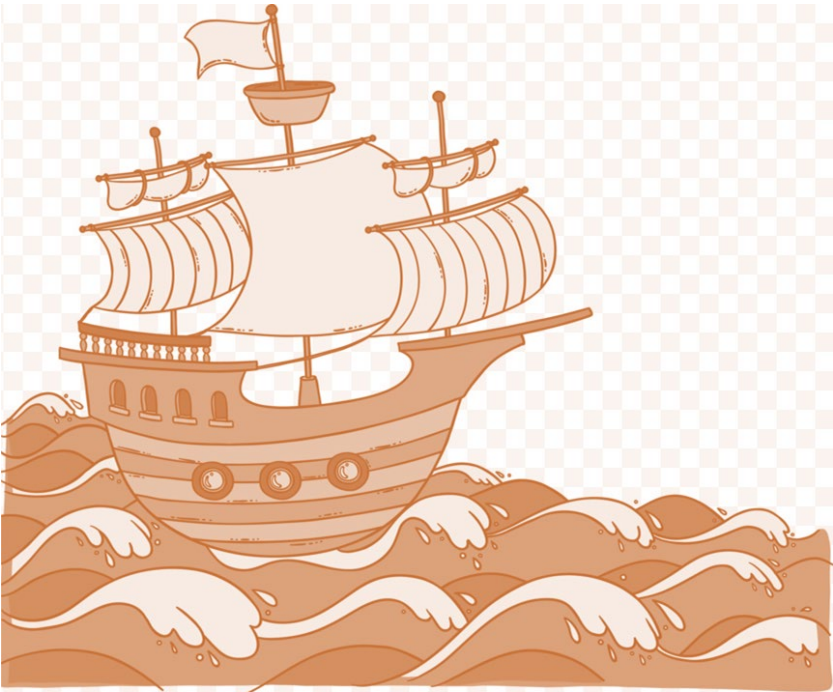
- Descrizione di fenomeni sanitari
- Valutazione di bisogni sanitari
- Generazione di ipotesi
- Valutazioni di appropriatezza
- Abitudini di vita (es. fumo)
- Esposizioni ambientali (es. inquinamento)
- Sistemi organizzativi
- Procedure cliniche entrate nella pratica senza validazione formale





**Progetto:**

**ASSOCIATION AMONG OBESITY,  
INFLAMMATION AND OUTCOME IN  
PATIENTS WITH ADVANCED LUMINAL  
BREAST CANCER TREATED WITH CDK 4/6  
INHIBITORS**



**NEW**

Association among obesity, inflammation and outcome in patients with advanced luminal breast cancer treated with CDK 4/6 inhibitors.

## PROPONENTE



**Dr. EMANUELA ROMAGNOLI**

*UOC Oncologia AV3 Macerata*

Email: [emanuelaromagnoli@gmail.com](mailto:emanuelaromagnoli@gmail.com)



**NEW**

Association among obesity, inflammation and outcome in patients with advanced luminal breast cancer treated with CDK 4/6 inhibitors.

## QUESITO E OBIETTIVI

### Primary objectives:

to evaluate the association between **neutrophil-to-lymphocyte ratio (NLR)** and **systemic immune inflammation index (SII =  $P \times N/L$ )** and **outcome** in patients with breast cancer in treatment with a CDK 4/6 Inhibitors.

### Secondary objectives:

to describe the **variations of NLR and SII** during treatment with a CDK 4/6 Inhibitors.

to analyze the association between **BMI** in patients with breast cancer and in treatment with a CDK 4/6 Inhibitors.

**NEW**

Association among obesity, inflammation and outcome in patients with advanced luminal breast cancer treated with CDK 4/6 inhibitors.

## QUESITO E OBIETTIVI

The study aim to analyze two cohorts of patients:

### Cohort A

Patients with advanced luminal BC treated with CDK 4/6 inhibitors as first line

### Cohort B

Patients with advanced luminal BC treated with CDK 4/6 inhibitors as second line





Association among obesity, inflammation and outcome in patients with advanced luminal breast cancer treated with CDK 4/6 inhibitors.

# QUESITO E OBIETTIVI

Paziente (iniziali)	Data di nascita	Kg	cm	BMI	Data diagnosi cito/istologica	Tipo istologico (1 duttale 2 lobulare 3 altro)	Grading	Stadio all'esordio	T	N	ER	PgR	Mib-1	Her 2	Adiuv 1=si 2=no
---------------------	-----------------	----	----	-----	-------------------------------	--	---------	--------------------	---	---	----	-----	-------	-------	-----------------

schema I linea	Data inizio prima linea	Data fine prima linea	Progressione (1=Si 0=no)	Data Progressione	N (prima di iniziare)	L (prima di iniziare)	P (prima di iniziare)	N (prima della TC a 3 mesi)	L (prima della TC a 3 mesi)	P (prima della TC a 3 mesi)	Data ultimo follow-up o morte
----------------	-------------------------	-----------------------	--------------------------	-------------------	-----------------------	-----------------------	-----------------------	-----------------------------	-----------------------------	-----------------------------	-------------------------------

schema II linea	Data inizio II linea	Data fine II linea	Progressione (1=Si 0=no)	Data Progressione	N (prima di iniziare)	L (prima di iniziare)	P (prima di iniziare)	N (prima della TC a 3 mesi)	L (prima della TC a 3 mesi)	P (prima della TC a 3 mesi)
-----------------	----------------------	--------------------	--------------------------	-------------------	-----------------------	-----------------------	-----------------------	-----------------------------	-----------------------------	-----------------------------

Data ultimo follow-up o morte	Successivi trattamenti si(1) no(2)	Decesso (1) si (2) no
-------------------------------	------------------------------------	-----------------------



**Progetto:**



**The IDENTITY Study  
Inherited brEast caNcer iTalian reglstrY:  
A RETROSPECTIVE-PROSPECTIVE  
OBSERVATIONAL COHORT STUDY TO  
EVALUATE CANCER PREVENTION  
STRATEGIES IN WOMEN WITH A  
DELETERIOUS MUTATION IN BRCA1-2**

**NEW**

# The IDENTITY Study: Inherited breast cancer Italian registry: **PROPONENTE**



**Dr. GIACOMO PELIZZARI**  
**Prof. FABIO PUGLISI**

*Department of Medicine (DAME) – University of Udine*  
*Department of Clinical Oncology – CRO Aviano IRCCS*

Email: [giacomo.pelizzari.med@gmail.com](mailto:giacomo.pelizzari.med@gmail.com)





# The IDENTITY Study: Inherited brEaSt caNcer iTalian reglSTrY:

## QUESITO E OBIETTIVI

### Primary objectives:

- To obtain and **centralize data about cancer prevention strategies** in women with a germline deleterious mutation in BRCA1-2 with or without a history of breast cancer in Italy

### Secondary objectives:

- To **evaluate clinico-radiological follow-up** (type and frequency) of women with a germline deleterious mutation in BRCA1-2 with or without a history of early breast cancer
- To **evaluate treatment** of early and/or advanced breast cancer in women with a germline deleterious mutation in BRCA1-2
- To **evaluate disease-free survival and/or progression-free survival and overall survival** of women with a germline deleterious mutation in BRCA1-2 treated for early and/or advanced breast cancer



# The IDENTITY Study: Inherited breast cancer Italian registry: QUESITO E OBIETTIVI

The study is composed of a retrospective cohort (A) and a prospective cohort (B):

**Cohort A (Retrospective):**

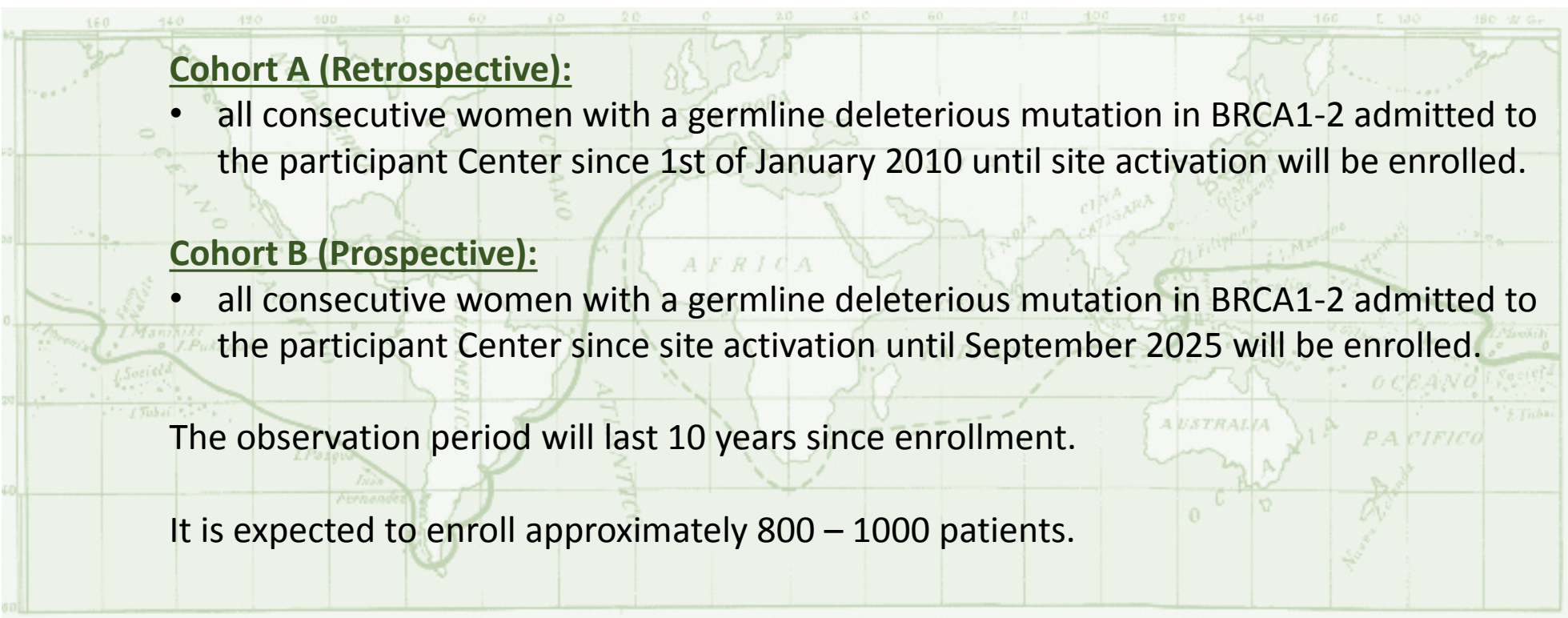
- all consecutive women with a germline deleterious mutation in BRCA1-2 admitted to the participant Center since 1st of January 2010 until site activation will be enrolled.

**Cohort B (Prospective):**

- all consecutive women with a germline deleterious mutation in BRCA1-2 admitted to the participant Center since site activation until September 2025 will be enrolled.

The observation period will last 10 years since enrollment.

It is expected to enroll approximately 800 – 1000 patients.





# The IDENTITY Study: Inherited breast cancer Italian registry:

## QUESITO E OBIETTIVI

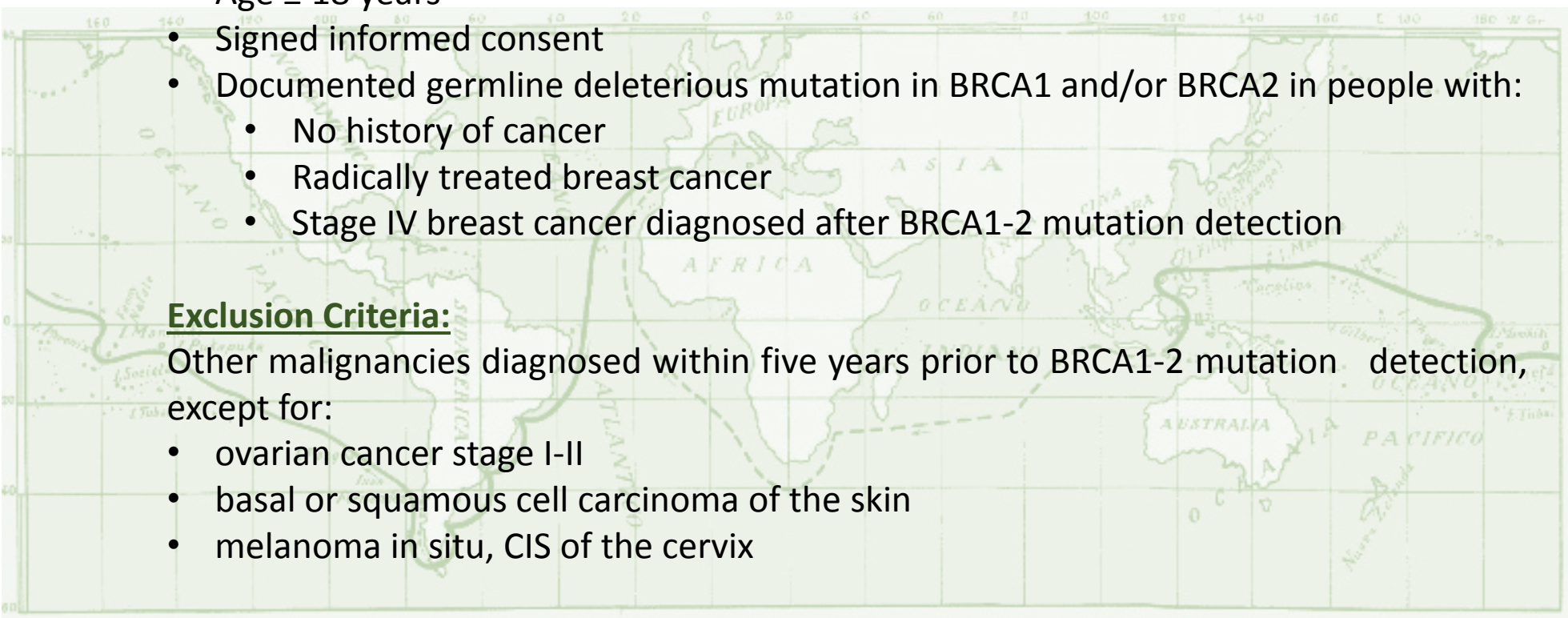
### Inclusion Criteria:

- Female sex
- Age  $\geq$  18 years
- Signed informed consent
- Documented germline deleterious mutation in BRCA1 and/or BRCA2 in people with:
  - No history of cancer
  - Radically treated breast cancer
  - Stage IV breast cancer diagnosed after BRCA1-2 mutation detection

### Exclusion Criteria:

Other malignancies diagnosed within five years prior to BRCA1-2 mutation detection, except for:

- ovarian cancer stage I-II
- basal or squamous cell carcinoma of the skin
- melanoma in situ, CIS of the cervix





# The IDENTITY Study: Inherited breast cancer in Italian registries:

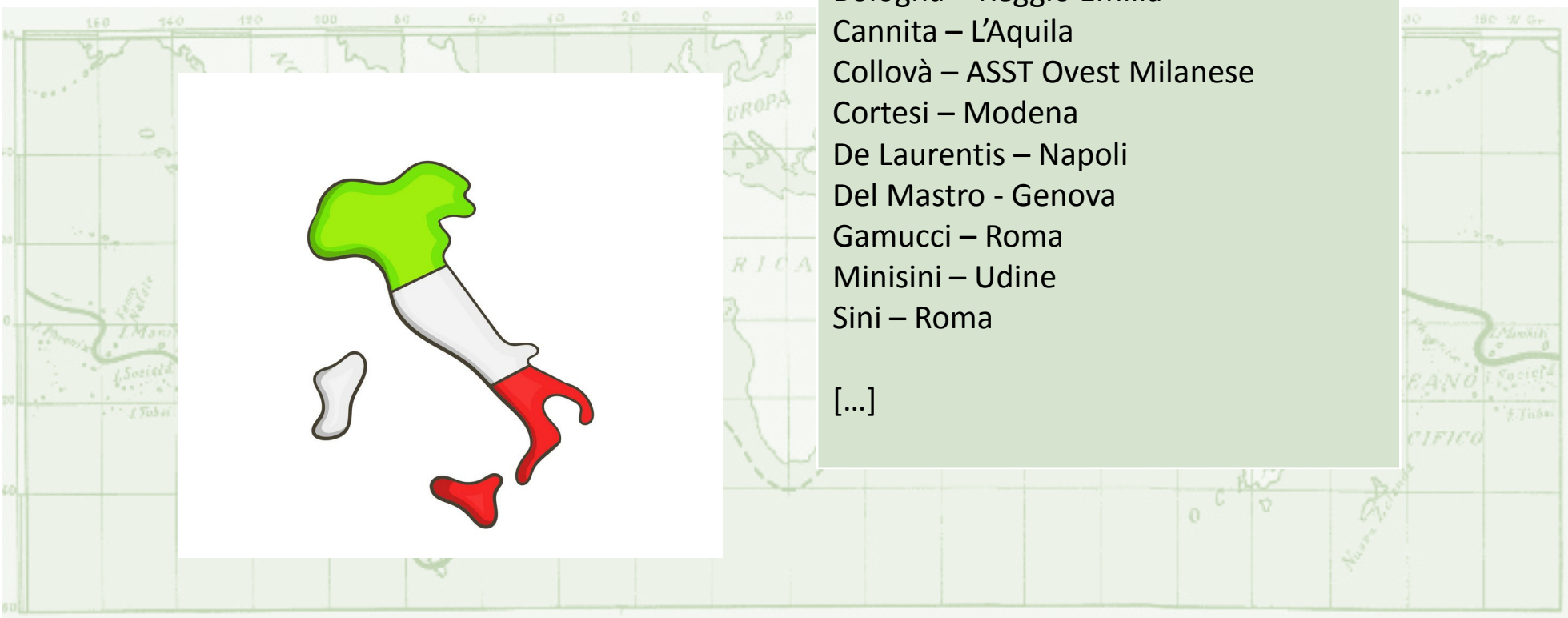
## QUESITO E OBIETTIVI

### Timeline

- Ethical committee evaluation 27.08.19
- Starting accrual September/October 2019

### Centers – Partial

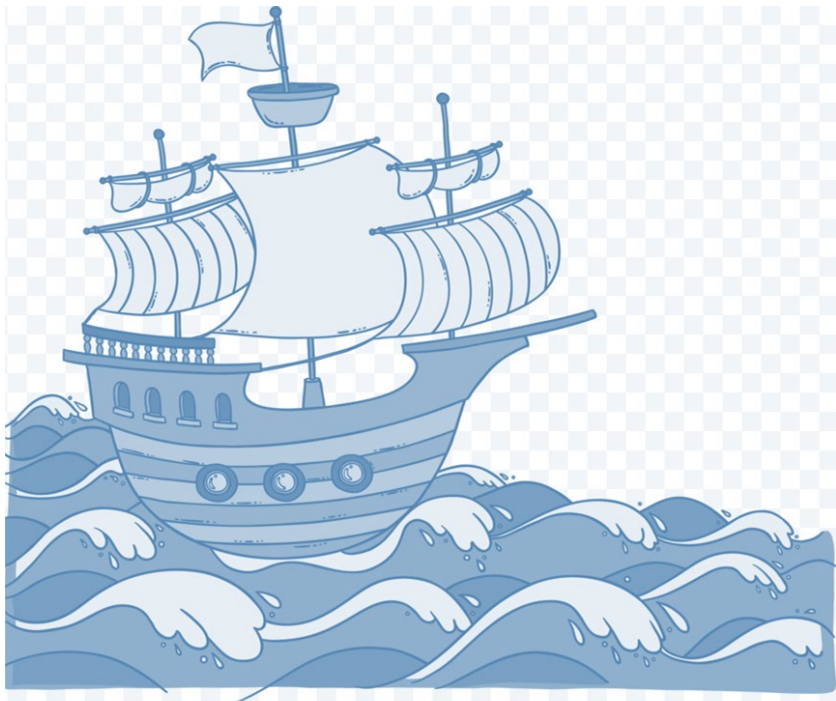
- Adamo – Messina
- Arpino – Napoli
- Bologna – Reggio Emilia
- Cannita – L’Aquila
- Collovà – ASST Ovest Milanese
- Cortesi – Modena
- De Laurentis – Napoli
- Del Mastro - Genova
- Gamucci – Roma
- Minisini – Udine
- Sini – Roma
  
- [...]





**Progetto:**

**AN AUTOMATED I2B2-BASED REGISTER FOR  
A NETWORK DATA-SHARING AND  
DEVELOPMENT OF OUTCOMES RESEARCH  
STUDIES**





**NEW**

An automated I2B2-based register for a network data-sharing and development of outcomes research studies

**PROPONENTE**



**Dr. ALBERTO ZAMBELLI**

*Hospital "ASST Papa Giovanni XXIII", Bergamo*

Email: [alberto.zambelli@asst-pg23.it](mailto:alberto.zambelli@asst-pg23.it)





An automated I2B2-based register for a network data-sharing and development of outcomes research studies

## QUESITO E OBIETTIVI

### Objectives:

The implementation of i2b2 platform at different GIM-sites to contribute to an i2b2-GIM network, that paves the way for innovative programs of data-sharing and multiple outcomes research studies.





An automated I2B2-based register for a network data-sharing and development of outcomes research studies

## QUESITO E OBIETTIVI



**I2b2 is an effective, exportable, academic, open-source data-warehouse system**

**I2b2 allows to share data from different archives and different institutions**

**I2b2 provides an automated temporal electronic phenotyping (clinical pathway) and supports processes of learning intelligence for research and treatment**



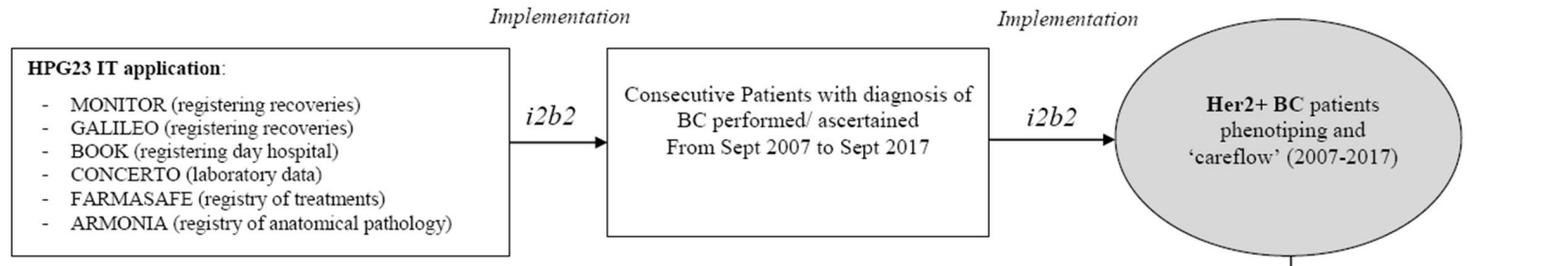
# AN EXEMPLE OF THE POTENTIAL OF I2B2 ON ARCHIVE ELECTRONIC DATASET (10YR-HER2+BCS SURVEY)



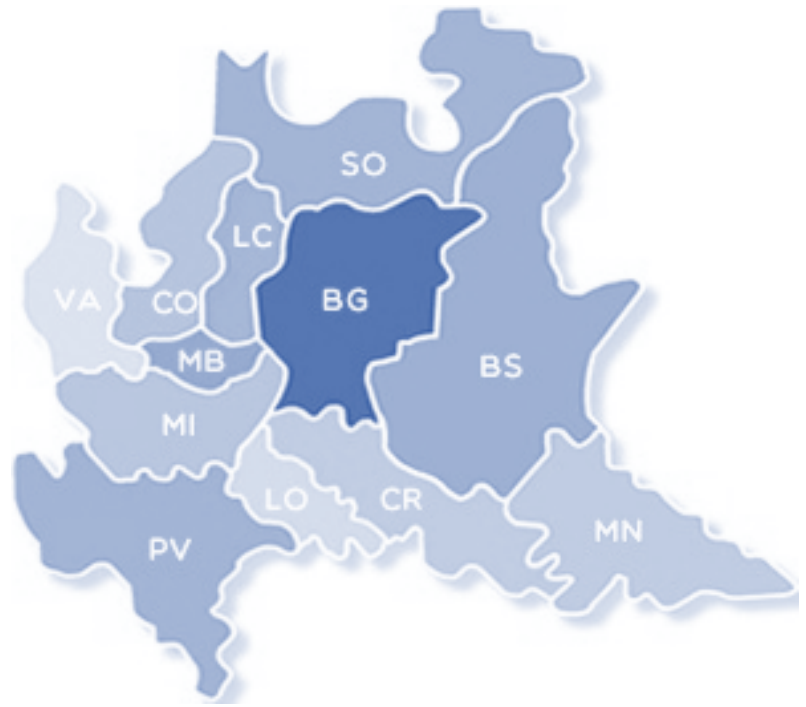
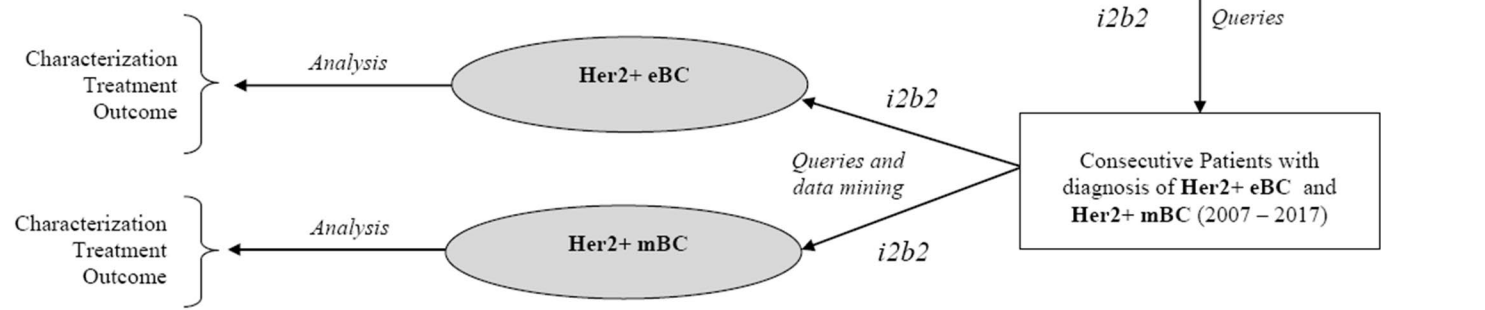
HER2-BC- FROM/O1- 2017  
Version 1.1, 02.11.2017

## 2 STUDY DESIGN SCHEMA

### Phase I



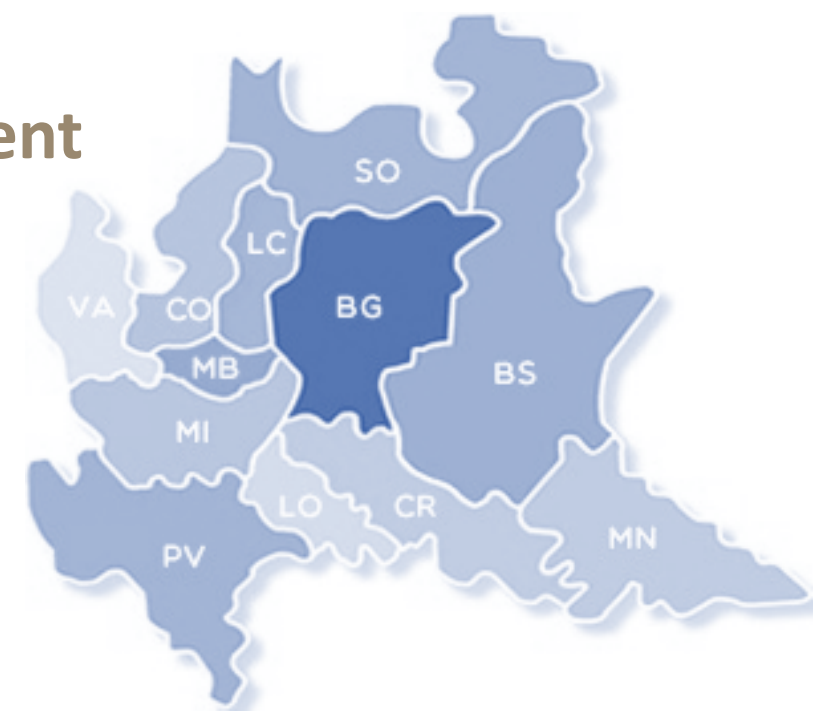
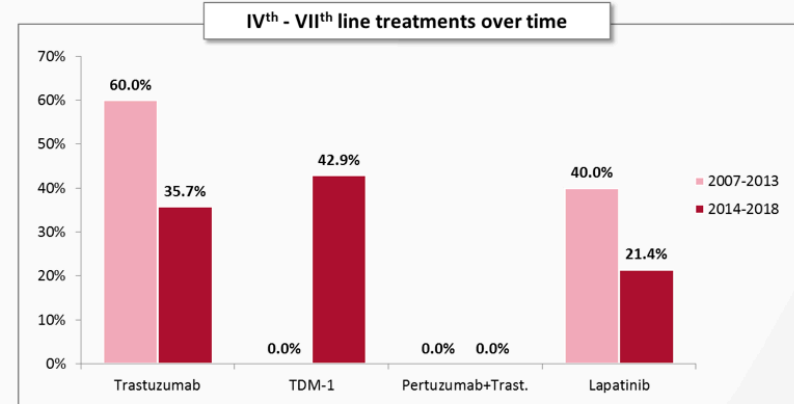
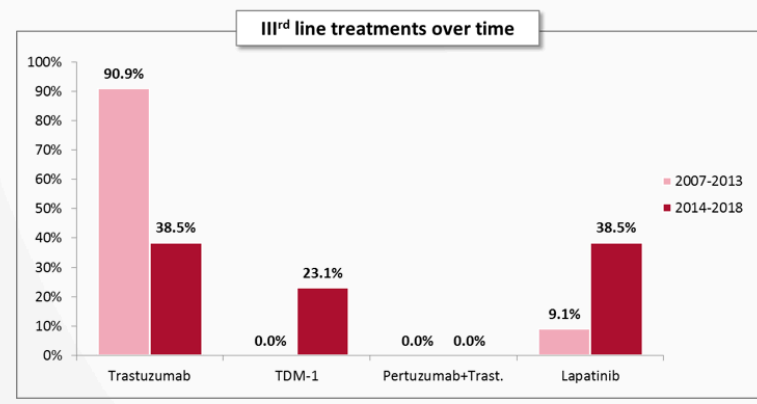
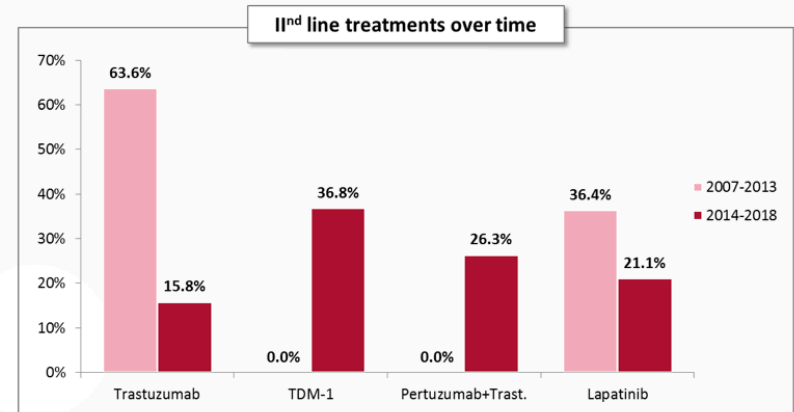
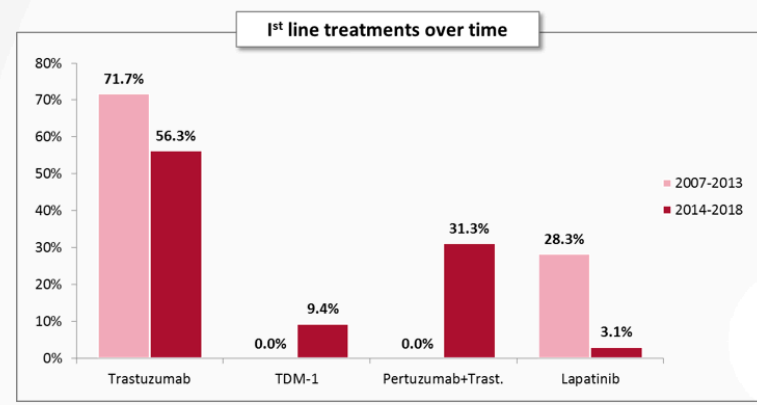
### Phase II





# AN EXEMPLE OF THE POTENTIAL OF I2B2 ON ARCHIVE ELECTRONIC DATASET (10YR-HER2+BCS SURVEY)

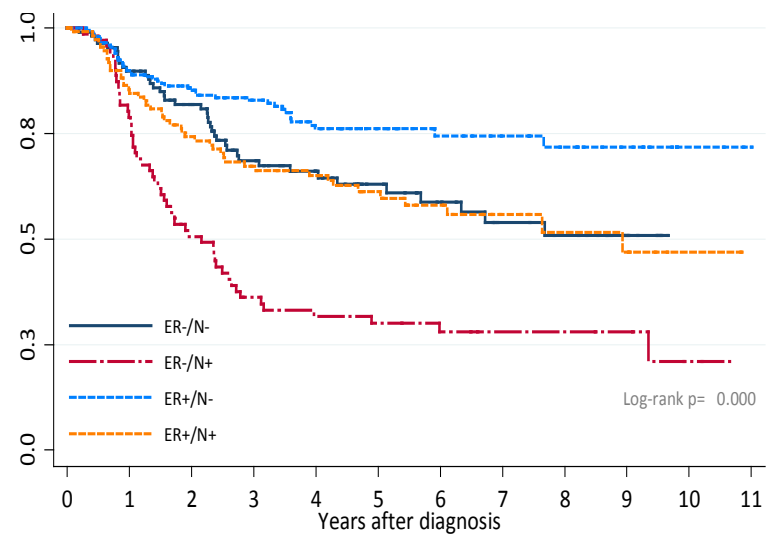
## Automated recognition of antiHER2 lines of treatment





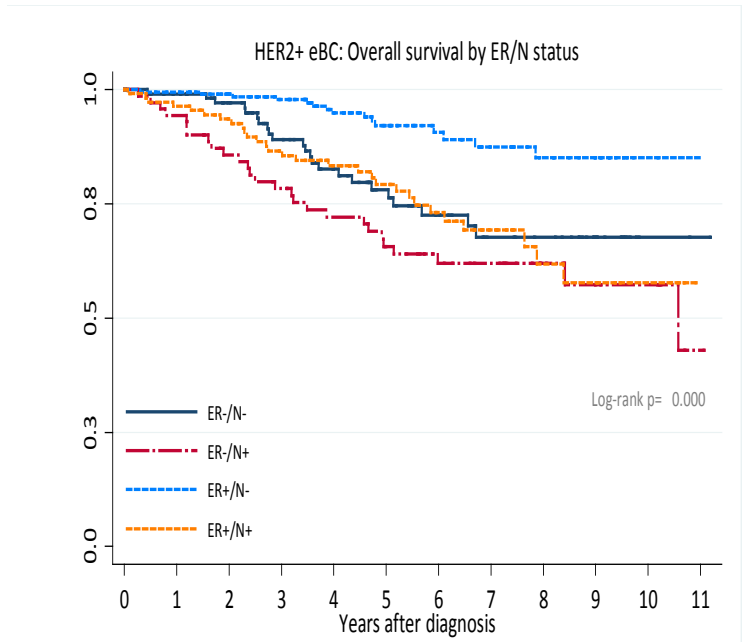
# AN EXEMPLE OF THE POTENTIAL OF I2B2 ON ARCHIVE ELECTRONIC DATASET (10YR-HER2+BCS SURVEY)

## EFS/OS automated description



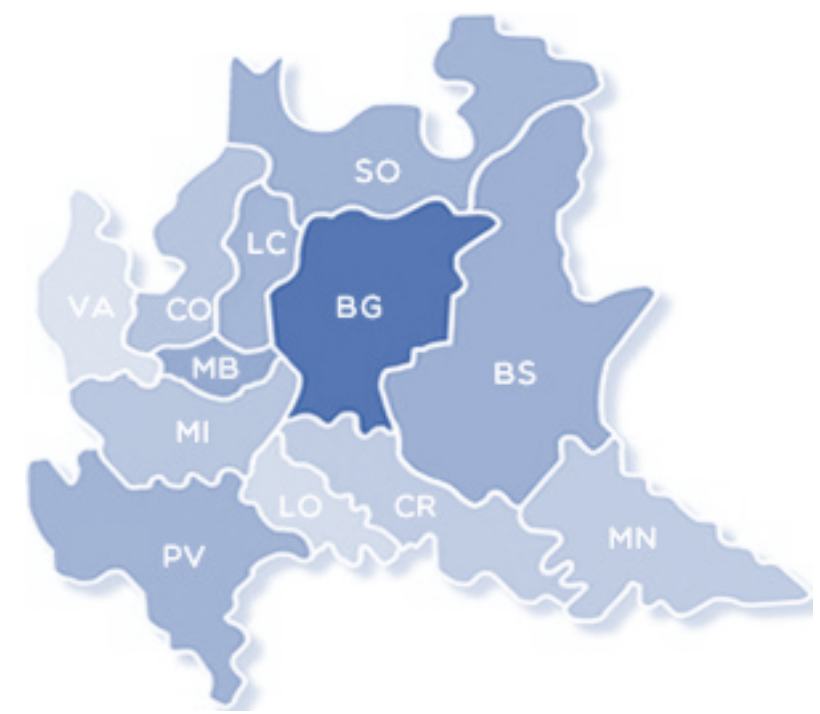
N (events)

ER-/N-	109	(11)	95	(8)	79	(12)	56	(2)	44	(2)	33	(2)	26	(2)	19	(1)	16	(0)	8	(0)	0	(0)	0
ER-/N+	72	(15)	56	(20)	35	(10)	24	(3)	21	(1)	18	(1)	14	(0)	9	(0)	7	(0)	5	(1)	2	(0)	0
ER+/N-	202	(20)	178	(8)	152	(5)	128	(9)	93	(0)	68	(1)	40	(0)	32	(1)	27	(0)	17	(0)	6	(0)	0
ER+/N+	113	(17)	93	(11)	77	(7)	65	(2)	56	(3)	39	(2)	28	(1)	17	(1)	11	(1)	10	(0)	4	(0)	0



N (deaths)

ER-/N-	109	(1)	105	(2)	93	(7)	74	(5)	58	(3)	45	(3)	34	(2)	25	(0)	22	(0)	13	(0)	2	(0)	1
ER-/N+	72	(4)	67	(6)	58	(5)	52	(4)	46	(4)	39	(2)	32	(0)	26	(0)	16	(1)	9	(0)	7	(1)	1
ER+/N-	202	(1)	197	(1)	177	(2)	156	(4)	123	(3)	89	(1)	60	(2)	48	(1)	36	(0)	23	(0)	7	(0)	0
ER+/N+	113	(4)	105	(3)	97	(7)	84	(3)	73	(3)	56	(4)	42	(2)	29	(2)	16	(1)	14	(0)	7	(0)	0

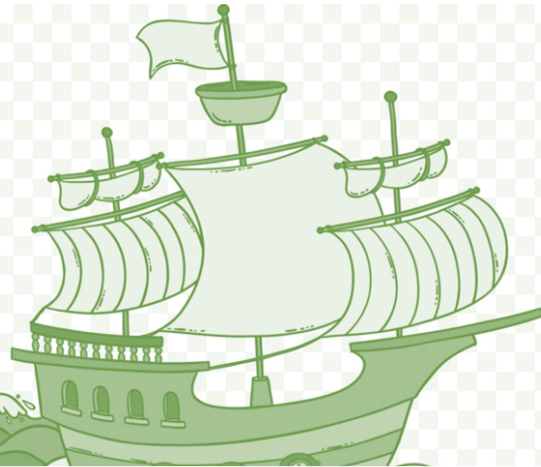


**NEW**

# Le tre nuove proposte



Association among obesity, inflammation and outcome in patients with advanced luminal breast cancer treated with CDK 4/6 inhibitors



**The IDENTITY Study  
Inherited brEast caNcer iTalian regIsTrY:  
A RETROSPECTIVE-PROSPECTIVE  
OBSERVATIONAL COHORT STUDY TO  
EVALUATE CANCER PREVENTION  
STRATEGIES IN WOMEN WITH A  
DELETERIOUS MUTATION IN BRCA1-2**



An automated I2B2-based register for a network data-sharing and development of outcomes research studies